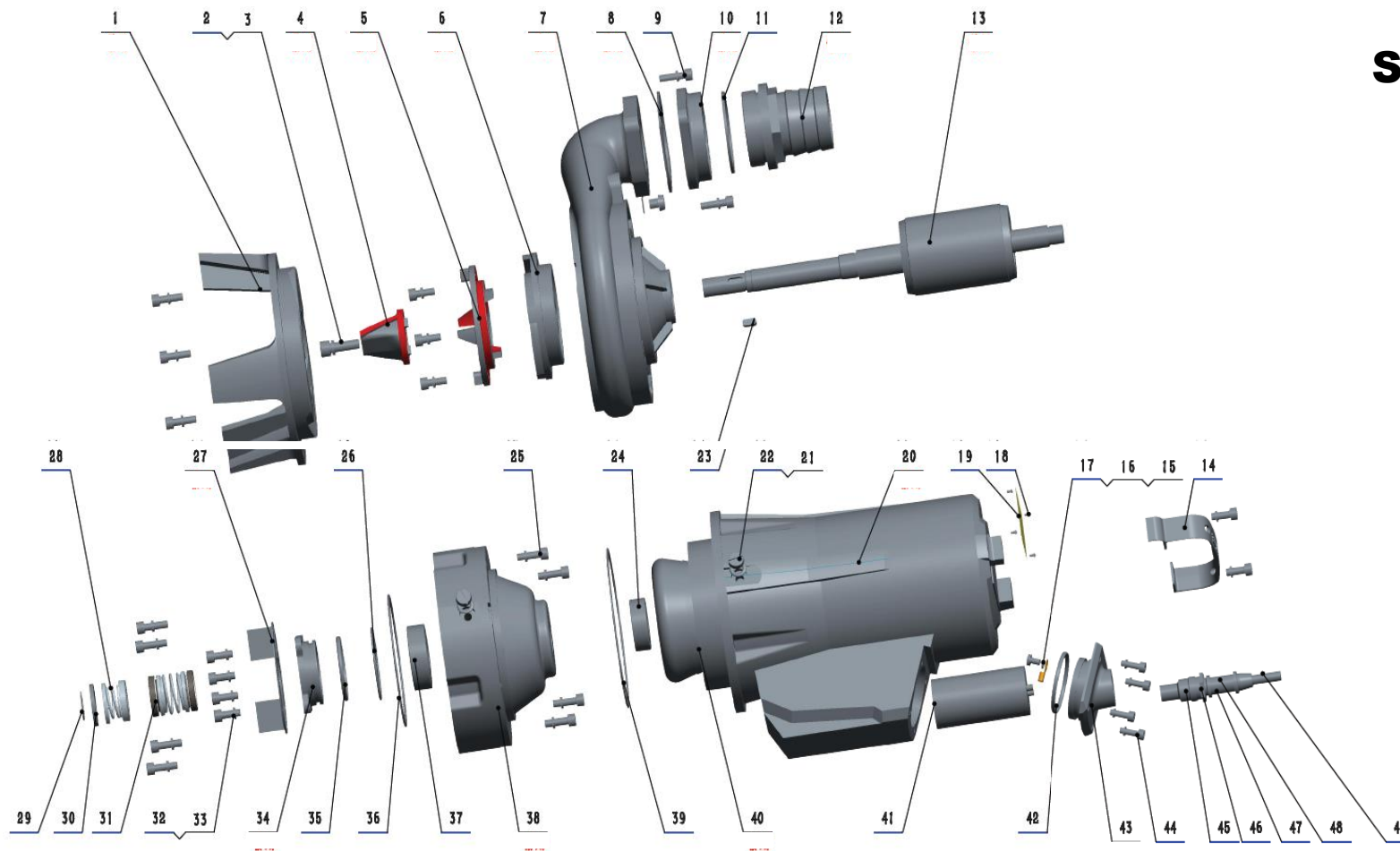


SHT 750M



- 1.Base
- 2.Spring washer
- 3.Screw
- 4.Cutting knife
- 5.Cutting disk
- 6.Impeller
- 7.Pump body
- 8.Gasket
- 9.Screw
- 10.Flange
- 11.Gasket
- 12.Outlet
- 13.Rotor
- 14.Handle

- 15.Screw
- 16.Wiring terminal
- 17.Spring washer
- 18.Rivet
- 19.Nameplate
- 20.Motor casing
- 21.Oring
- 22.Screw
- 23.Key
- 24.Bearing
- 25.Screw
- 26.Oring
- 27.Oil cavity cover

- 28.Mechanical seal
- 29.Circlip for shaft
- 30.Flat washer
- 31.Mechanical seal
- 32.Screw
- 33.Spring washer
- 34.Bearing cap
- 35.Oring
- 36.Oring
- 37.Bearing
- 38.Oil cavity
- 39.Oring
- 40.Stator with winding

- 41.Capacitor
- 42.Oring
- 43.Cable box cover
- 44.Screw
- 45.Cable fixing washer
- 46.Cable gland
- 47.Cable shield
- 49.Cable

SHT 750M

Nº Desp	Codigo	Codigo proveedor	Denominación
1	SH-001	50WQD7-7_001	Base for 50WQD7-7-0.75QG
2	SH-002	50WQ-QG-02	Spring washer
3	SH-003	50WQ-QG-03	Screw
4	SH-004	50WQD7-7_004	Cutting knife for 50WQD7-7-0.75QG
5	SH-005	50WQD7-7_005	Cutting disk for 50WQD7-7-0.75QG
6	SH-006	50WQD7-7_006	Impeller for 50WQD7-7-0.75QG
7	SH-007	50WQD7-7_007	Pump body for 50WQD7-7-0.75QG
8	SH-008	50WQD7-7_008	Gasket for 50WQD7-7-0.75QG
9	SH-009	50WQ-QG-09	Screw
10	SH-010	50WQD7-7_0010	Flange for 50WQD7-7-0.75QG
11	SH-011	50WQD7-7_011	Gasket for 50WQD7-7-0.75QG
12	SH-012	50WQD7-7_012	Outlet for 50WQD7-7-0.75QG
13	SH-013A	50WQ13-0,75kW	Rotor 0,75 Kw mono 230V
14	SH-014	50WQD7-7_014	Handle for 50WQD7-7-0.75QG
15	SH-015	50WQ-QG-15	Screw
16	SH-016	50WQ-QG-16	Wiring terminal
17	SH-017	50WQ-QG-17	Spring washer
18	SH-018	50WQ-QG-18	Rivet
19	SH-019A	50WQ19M-0,75kW	Nameplate 0,75 Kw mono 230V
20	SH-020	50WQD7-7_020	Motor casing for 50WQD7-7-0.75QG
22	SH-022	50WQ-QG-22	Screw
23	SH-023	50WQD7-7_023	Key for 50WQD7-7-0.75QG
24	SH-024	50WQD7-7_024	Bearing 1 for 50WQD7-7-0.75QG (6302-2RZ)
25	SH-025	50WQ-QG-25	Screw
27	SH-027	50WQD7-7_027	Oil cavity cover for 50WQD7-7-0.75QG $\Phi 90^* \Phi 45^* 2/WQM1.1H1-4/Q235A$
28	SH-028	50WQD7-7_028	Mechanical seal 1 for 50WQD7-7-0.75QG (LADO BOMBA)
29	SH-029	50WQD7-7_029	Circlip for shaft for 50WQD7-7-0.75QG (18/304)
30	SH-030	50WQD7-7_030	Flat washer for 50WQD7-7-0.75QG
31	SH-031	50WQD7-7_031	Mechanical seal 2 for 50WQD7-7-0.75QG (LADO MOTOR)
32	SH-032	50WQ-QG-32	Screw
33	SH-033	50WQ-QG-33	Spring washer
34	SH-034	50WQD7-7_034	Bearing cap for 50WQD7-7-0.75QG
37	SH-037	50WQD7-7_037	Bearing 2 for 50WQD7-7-0.75QG (6304-2RZ)
38	SH-038	50WQD7-7_038	Oil cavity for 50WQD7-7-0.75QG
40	SH-040	50WQD7-7_040	Stator with winding for 50WQD7-7-0.75QG
41	SH-041	50WQD7-7_041	Capacitor for 50WQD7-7-0.75QG
43	SH-043	50WQD7-7_043	Cable box cover for 50WQD7-7-0.75QG
44	SH-044	50WQ-QG-44	Screw
21,26,35,36,39,42	SH-021	50WQD7-7_021	Oring set for 50WQD7-7-0.75QG
45,46,47,49	SH-045	50WQD7-7_045	Cabel set for 50WQD7-7-0.75QG