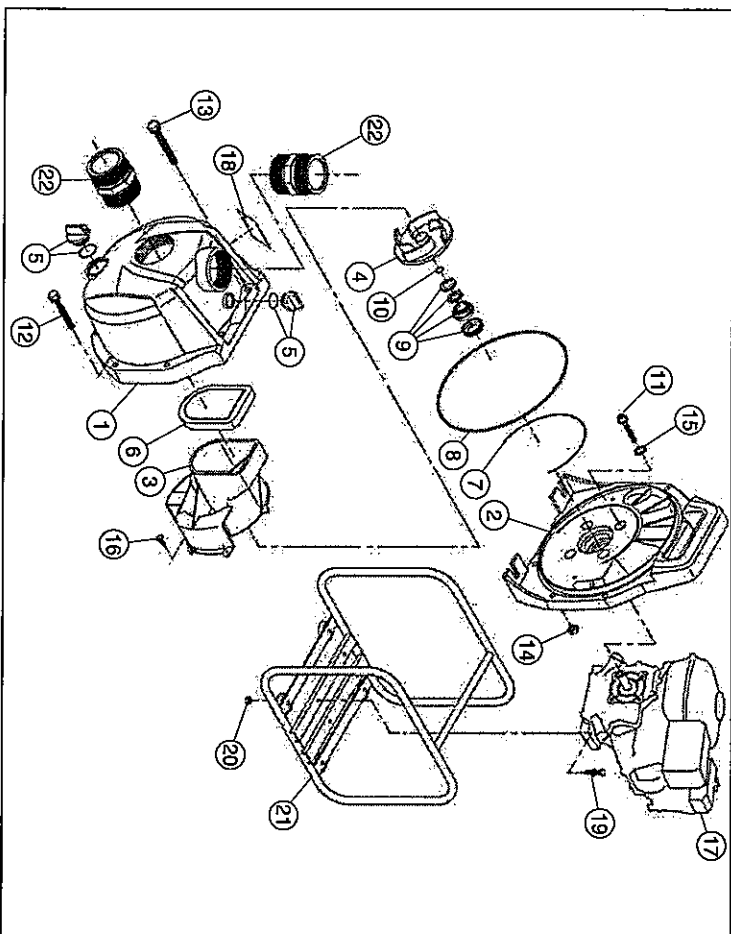


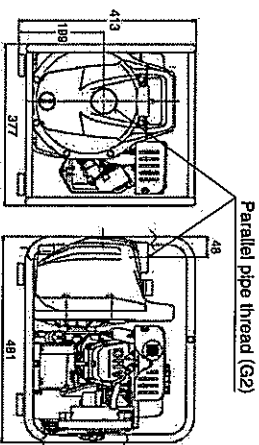
## PARTS LIST



No.	PARTS CODE	PARTS NAME	QTY
1	0130024	Pump Casing	1
2	0130002	Flange Bracket	1
3	0130003	Volute Casing	1
4	0130004	Impeller	1
5	0136001	20A Plug Set	2
6	0130009	Check Valve	1
7	0130008	Volute Casing Packing	1
8	0130005	Flange Packing	1
9	0130011	Mechanical Seal	1
10	0110466	Adjusting Washer	2
11	734705074	Socket Bolt MBx50	4
12	746205056	Bolt MBx55	6
13	746205057	Bolt MBx60	2
14	827405008	Nut M8	8
15	854255008	Seal Washer φ8	4
16	718505035	⊕Tapping Screw M4x12	3

No.	PARTS CODE	PARTS NAME	QTY
17	—	Engine (With Alert)	1
18	0130055	Name Plate	1
19	743119051	Bolt MBx35	4
20	827419008	Nut M8	4
21	0117280	Base Set	1
22	0130023	Nipple	2

### Outline Drawing



### SAFETY PRECAUTIONS

Read this "Safety Precautions" before operation. Below information should not be neglected for proper use of this product. Your understanding can prevent harm or danger to user or others.

Following information is very important for safety in handling this product. Be sure to observe them.

**⚠ DANGER** Indicates an imminently hazardous situation which, if not avoided, will result in death or serious injury.

**⚠ WARNING** Indicates a potentially hazardous situation which, if not avoided, could result in death or serious injury.

**⚠ CAUTION** Indicates a potentially hazardous situation which, if not avoided, may result in minor or moderate injury, or property damage.

**🚫 PROHIBITED** **⚠ ALERT**

### ⚠ DANGER

**🚫** **Inflammable!** Keep away from fire at all time.

**🚫** Do not operate Hidels pump inside a room or under bad ventilation condition. Exhaust gas includes harmful substances. There is danger of gas poisoning.

**🚫** In case of operating Hidels Pump in a well or in a hollow, the person operating the pump must not enter the small space as there is danger of gas poisoning.

**🚫** Do not use pump on slope. Set pump away from rain. In good ventilation and temperature is below 40°C. Fuel spillage at tank cap or carburetor may cause fire.

### ⚠ WARNING

**🚫** Do not put any obstacle around engine muffler. It may cause fire or breakage.

**🚫** Read carefully and understand fully before use.

**🚫** Keep children away from pump at all time.

**🚫** Do not overhaul or repair, except by authorized person.

### ⚠ CAUTION

**🚫** Do not touch muffler or any part of the engine. It could cause burn.

**🚫** Do not use this pump for drinking water, mud water, kerosene, light oil, heavy oil, gasoline, etc.

**🚫** Do not use water containing residue sand, or any solid which may shorten life span of pump.

**🚫** Use correct type of suction hose. Water temperature tolerance: 5 to 45°C. May cause breakage if use outside the mentioned range.

**🚫** Please don't run pump without water inside the pump. This will cause pump damage.