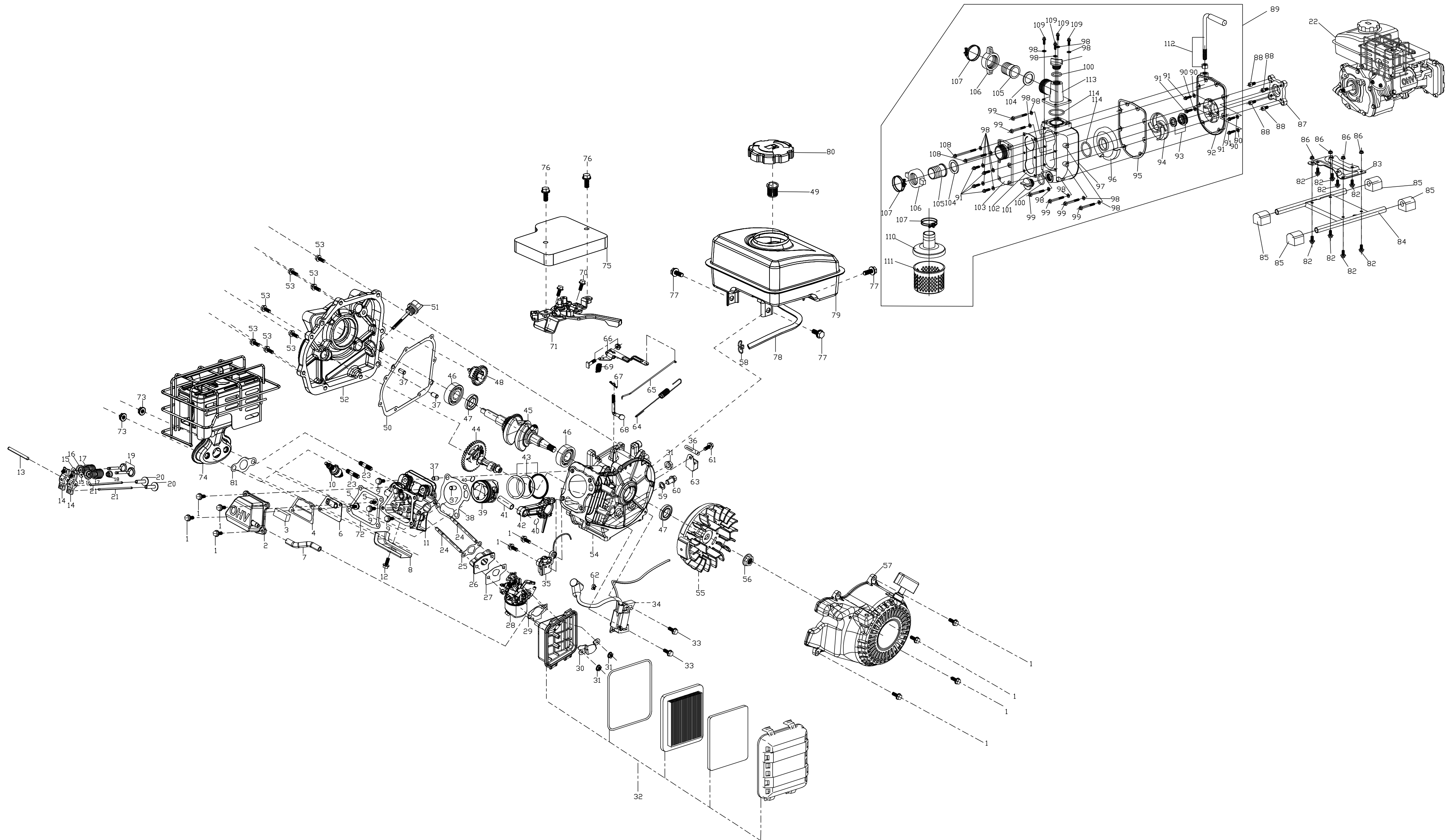


MRC40



序号	零部件件号	零部件名称	Description	规格状态	数量
No.	Part No.				Reqd. QTY
1	380140013-0005	六角头法兰面螺栓	Hexagon bolt with flange	GB/T 5789_M6_L=16;镀蓝白锌Q16	11
2	120230174-0001	气缸头盖	Cylinder head cover	T291_铝合金;	1
3	150290040-0001	机油滤网	Engine oil Strainer	T291_材料聚酯纤维;	1
4	110850028-0001	呼吸槽密封垫	PACKING, BREATHER CHAMBER	T291_纸垫_厚0.5;	1
5	380140497-0002	六角头法兰面螺栓	Hexagon bolt with flange	GB/T 16674.1_M5_L=8;镀蓝白锌Q16	2
6	110840037-0001	呼吸槽盖板	CAP,BREATHER CHAMBER	T291_带簧片、压板、挡板;	1
7	380741250-0002	通气管	Breather tube	T291_Φ7×Φ11_异型_空滤器废气管;满足ROHS要求	1
8	160190104-0001	空气导流罩	air deflector	T291;镀蓝白锌Q16	1
9	380140515-0001	六角头法兰面螺栓	Hexagon bolt with flange	T290_M6_L=50_10.9级_缸头连接螺栓;镀蓝白锌Q16	4
10	270960054-0001	火花塞	Spark plug	E6RTC_无干扰;	1
11	120080740-0001	气缸头	Cylinder head	T291_燃烧室容积7.5;	1
12	380140039-0003	六角头法兰面螺栓	Hexagon bolt with flange	GB/T 5789_M6_L=8;镀蓝白锌Q16	1
13	140510046-0001	气门摇臂轴	Valve rocker shaft	T290;含Hg/Cr6/Pb/PBB/PBDE≤1000ppm,Cd≤100ppm	1
14	140450080-0001	气门摇臂组合	Valve rocker combination	T291_冲压摇臂;	2
15	140390028-0001	气门锁夹	Valve locker	T290;含Hg/Cr6/Pb/PBB/PBDE≤1000ppm,Cd≤100ppm	2
16	140380038-0001	气门弹簧座	Retainer, valve spring	T290;含Hg/Cr6/Pb/PBB/PBDE≤1000ppm,Cd≤100ppm	2
17	140340038-0001	气门内弹簧	Inner spring of valve	T290;含Hg/Cr6/Pb/PBB/PBDE≤1000ppm,Cd≤100ppm	2
18	140400024-0001	挡油罩	Valve oil seal	T290;含Hg/Cr6/Pb/PBB/PBDE≤1000ppm,Cd≤100ppm	1
19	500550093-0001	气门套件	Valve Kit	T291_排气门不堆焊;	1
20	140690021-0001	挺柱	Lifter, Valve	T290;含Hg/Cr6/Pb/PBB/PBDE≤1000ppm,Cd≤100ppm	2
21	140670060-0001	挺杆组合	Push rod	T291_长113;	2
22	291003863-396200	水泵动力>LC148F-2	Engine assembly	水泵动力-油无-后1点钟-空泡沫滤芯加纸质滤芯-化防	1
23	380180149-0001	双头螺栓	Stud	T270_M8_L=47;镀蓝白锌Q16	2
24	380180144-0001	双头螺栓	Stud	T320_M6_L=97;镀蓝白锌Q16	2
25	170430198-0001	化油器密封垫	Carburetor gasket	T291_不含石棉纸垫_进气管密封垫;含Hg/Cr6/Pb/PBB	1
26	170440109-0001	化油器隔热垫	Heat insulating pad for carburetor	T291_酚醛树脂PF;	1
27	170430199-0001	化油器密封垫	Carburetor gasket	T291_不含石棉纸垫_化油器与隔热垫之间的密封垫;	1
28	170022361-0001	化油器	Carburetor	T291_防篡改_冲压油杯_EPA3_转速4300rpm专用;油杯	1
29	170430200-0001	化油器密封垫	Carburetor gasket	T291_不含石棉纸垫_空滤器垫;含Hg/Cr6/Pb/PBB/PBDE	1
30	180330058-0001	滤芯支撑板体	Support plate body of filter element	T291_材料ST12;	1
31	380370048-0001	六角法兰面螺母	Hexagon nut with flange	GB/T 6177.1_M6;镀蓝白锌Q16	3
32	180020871-0001	空滤器	Air filter	T291_纸质滤芯+泡沫滤芯;	1
33	380140266-0002	六角头法兰面螺栓	Hexagon bolt with flange	Q/LX G 8.2_A型_M6_L=25;镀蓝白锌Q16	2
34	270920407-0001	点火线圈	COIL ASSY.,IGNITION	T291_带5kΩ金属屏蔽帽;	1
35	281850298-0001	油位传感器	Oil level sensor	T291_电感式;	1
36	380940346-0001	线夹	Cable cleat	T560;	1
37	380600119-0001	定位销	Location pin	T110_d=8_L=12;	4
38	120150237-0001	气缸头密封垫	Gasket for cylinder head	T291_不锈钢_厚0.25;	1
39	130030288-0001	活塞	Piston	T291_T型,一二环槽宽1,油环槽宽2;	1
40	380560098-0001	钢丝挡圈	Steel cable baffle ring	T290_活塞销挡圈;	2
41	130060060-0001	活塞销	Piston pin	T290_φ12×38;含Hg/Cr6/Pb/PBB/PBDE≤1000ppm,Cd≤1	1
42	130150130-0001	连杆	Connecting rod	T291;	1
43	130070250-0001	活塞环组合	Piston ring combination	T291_一环,二环厚1mm,组合环厚2mm;	1
44	140020161-0001	凸轮轴组合	Camshaft assy	T291_塑料齿轮;	1
45	130290687-0001	曲轴部件	crankshaft	T291_L轴_1.5寸水泵用;	1
46	380630005-0001	轴承	Bearing	GB/T 276_6204;	2
47	380650551-0001	油封	Oil seal	T290_d=20_D=35_b=5;含Hg/Cr6/Pb/PBB/PBDE≤1000p	2
48	171750037-0001	调速齿轮部件	Components of governor gear	T291;	1
49	170720001-0001	注油口滤网组合	Pouring orifice filter screen combination	T040;	1
50	110830067-0001	曲轴箱盖密封垫	Crankcase cover gasket	T291_不含石棉;	1
51	110690104-0001	机油尺组合	Oil rule combination	T291_手动部分弧形,标尺带加强筋;带密封圈_本色;灰	1
52	110820171-0001	曲轴箱盖	Crankcase cover	T291_单机箱盖;	1
53	380140086-0002	六角头法兰面螺栓	Hexagon bolt with flange	GB/T 5789_M6_L=22;镀蓝白锌Q16	7
54	110810346-0001	曲轴箱体	Crankcase body	T291_有孔,调速臂孔Φ6,手启动;	1
55	270020304-0001	磁电机转子部件	FLYWHEEL COMP	T291_手启动用_无内磁钢_不带齿圈;	1
56	380370049-0001	六角法兰面螺母	Hexagon nut with flange	T010_M12×1.25;镀蓝白锌Q16	1
57	193490420-0004	手起动作件	Manual starting assembly	T291_一点钟_手启动_铁棘爪_塑料_风扇罩、拉盘	1
58	380950188-0001	管夹	Pipe clip	T040_油管卡圈;	2
59	380450514-0001	平垫圈	Flat washer	T040_T21_内径10_外径16_厚度1.5_铝及铝合金;	1
60	110260025-0001	密封螺塞	Sealing plug screw	T040_M10×1.25×15;镀蓝白锌Q16	1
61	380140039-0003	六角头法兰面螺栓	Hexagon bolt with flange	GB/T 5789_M6_L=8;镀蓝白锌Q16	1
62	380930024-0001	定位线卡	Location wire nail	T110_燕尾卡;	1

63	281890001-0001	机油保护器	Engine oil protector	T040;	1
64	171610033-0001	节气门复位弹簧	throttle return spring	T291;	1
65	171590035-0001	油门拉杆	Throttle rod	T291;	1
66	171620046-0001	调速支架	Speed regulating bracket	T291;带方头平端紧定螺钉/六角法兰面螺母_不带防	1
67	381350004-0001	销夹	Pin clip	T040_调速臂用;	1
68	171630029-0001	调速臂	Speed regulating arm	T291;	1
69	171600109-0001	调速弹簧	Governing spring	T291_直径1毫米,22圈,长90毫米_水泵用;	1
70	380140039-0003	六角头法兰面螺栓	Hexagon bolt with flange	GB/T 5789_M6_L=8;镀蓝白锌Q16	1
71	171680142-0001	油门操纵手柄组合	Throttle handle combination	T291_单机用;镀蓝白锌Q16	1
72	120250064-0001	气缸头盖密封垫	Gasket for cylinder head cover	T291_厚0.5_不含石棉纸垫;含Hg/Cr6/Pb/PBB/PBDE≤1	1
73	380370074-0002	六角法兰面螺母	Hexagon nut with flange	GB/T 6177.1_不带防滑齿_M8;镀蓝白锌Q16	2
74	180572091-0001	消声器	Muffler	T291_不带防烫钢丝网;	1
75	160200070-0001	发动机导流罩	Side plate	T291_缸头上方_PP料;	1
76	380140170-0003	六角头法兰面螺栓	Hexagon bolt with flange	Q/LX G 8.2_A型_M6_L=12;镀蓝白锌Q16	2
77	380140209-0001	六角头法兰面螺栓	Hexagon bolt with flange	GB/T 5789_M6_L=14;镀蓝白锌Q16	3
78	380750934-0002	油管	Oil tube	T291_内径4_外径8_长196;满足ROHS要求	1
79	170501208-0001	油箱	Tank	T291_金属;纯黑H01_带出油嘴	1
80	170870040-0001	油箱盖	Tank cover	T040_B款_塑料;亚光黑(塑料)	1
81	180650123-0001	排气口密封垫	Outlet gasket	T291_石墨;含Hg/Cr6/Pb/PBB/PBDE≤1000ppm,Cd≤100	1
82	380140040-0005	六角头法兰面螺栓	Hexagon bolt with flange	GB/T 16674.1_M8_L=16;镀蓝白锌Q16	8
83	110800007-0001	发动机底座	Engine base	T023_加厚_条形安装孔;	1
84	300720037-0001	机架部件	Components of frame	T800;电泳黑漆Q12	1
85	300770002-0001	机架减震座	Frame shock absorbing seat	T800;	4
86	380370007-0004	六角法兰面螺母	Hexagon nut with flange	GB/T 6177.1_M8;镀蓝白锌Q16	4
87	660330001-0001	水泵连接盘	Water pump coupling	T800;	1
88	380190051-0006	内六角螺钉	Socket head screw	GB/T 70.1_M8_L=16;镀蓝白锌Q16	4
89	660180015-0001	水泵部件	Components of water pump	T800_1.5寸,叶轮加大;塑料接头、接口	1
90	660830010-0001	支座螺栓密封垫圈	Support bolt seal washer	T850_内径6,外径12,厚度1.5,铝合金;	4
91	380140003-0004	六角头法兰面螺栓	Hexagon bolt with flange	GB/T 16674.1_M6_L=20;镀铬Q01	8
92	660190007-0001	支座	Support	T800	1
93	660350006-0001	机械密封组合	Mechanical seal combination	T800	1
94	660200013-0001	水泵叶轮	Impeller	T800_叶轮加大	1
95	660310009-0001	密封垫片	Sealing washer	T800_泵体	1
96	660210011-0001	涡壳	Centrifugal chamber	T800_叶轮加大	1
97	660220012-0001	泵体	Pump body	T800_叶轮加大	1
98	380450004-0003	平垫圈	Flat washer	GB/T 97.1_内径6;镀白锌Q08	16
99	380140186-0004	六角头法兰面螺栓	Hexagon bolt with flange	GB/T 16674.1_M6_L=55;镀蓝白锌Q16	6
100	380840462-0001	密封圈	Seal ring	Q/LX G 8.22_D=25_d=4;	2
101	660240003-0001	螺塞	Screw plug	T800	2
102	660320005-0001	吸入阀	Suction valve	T800	1
103	660230006-0001	负压法兰	Negative pressure frange	T800	1
104	380840440-0001	密封垫片	Sealing washer	T800_水泵软接头_D=32_外径45_厚度3	2
105	660280003-0001	软管接口	TIE-IN , TUBE	T800	2
106	660270003-0001	吸水管接头	Suction pipe joint	T800	2
107	380960085-0001	卡箍组合	Clip combination	T800_水泵软管	3
108	380140375-0001	六角头法兰面螺栓	Hexagon bolt with flange	GB/T 5789_M6_L=85;镀蓝白锌Q16	2
109	380140013-0005	六角头法兰面螺栓	Hexagon bolt with flange	GB/T 5789_M6_L=16;镀蓝白锌Q16	4
110	660290005-0001	进水口滤网盖	Intake filter screen cover	T800	1
111	660300005-0001	进水口滤网	Intake filter screen	T800	1
112	660790001-0001	水泵提手	Water pump handle	T800	1
113	660250006-0001	输出法兰	Output flange	T800	1
114	380840461-0001	密封圈	Seal ring	Q/LX G 8.22_涡壳_D=44_d=4	2