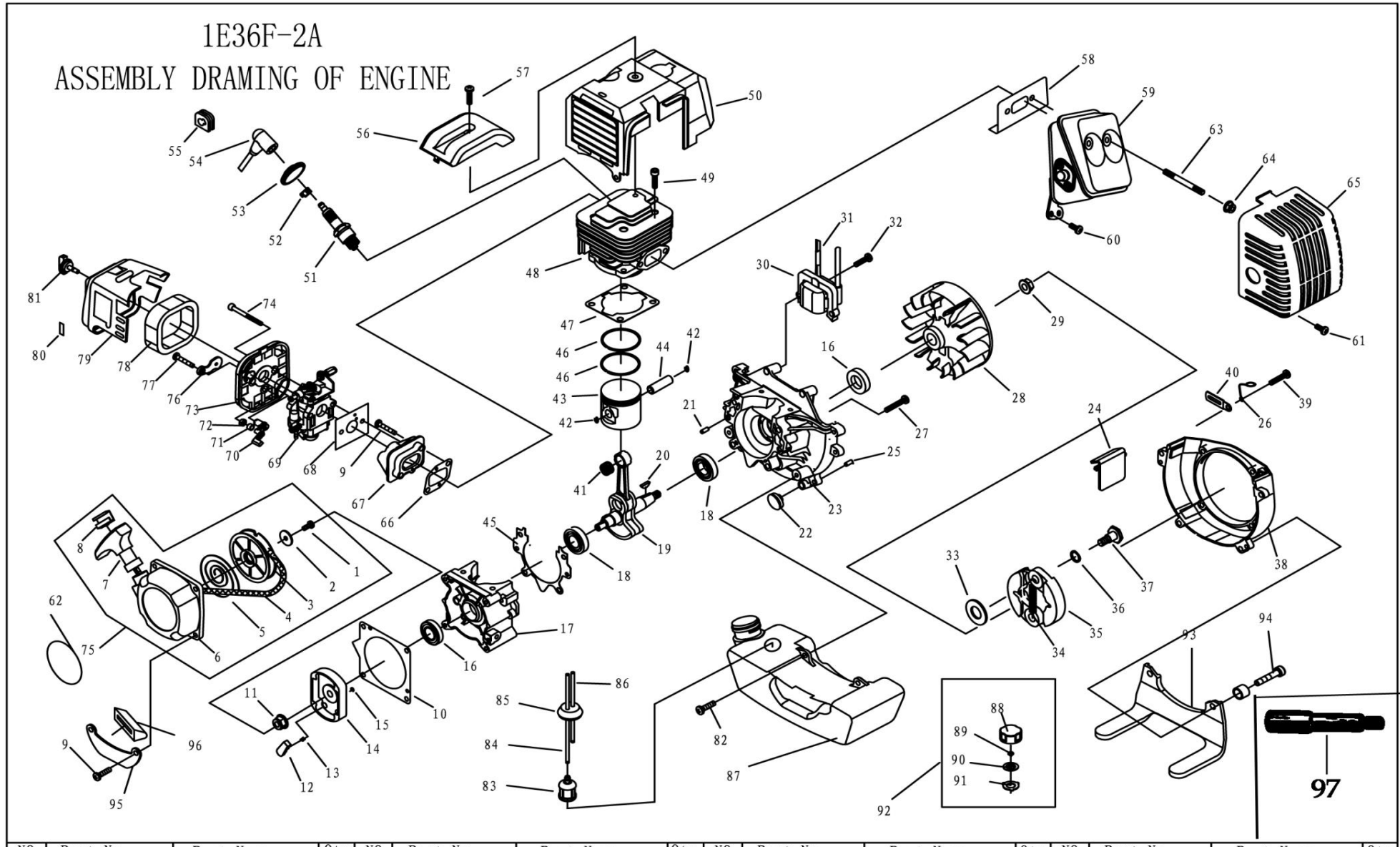


MOTOR IPUMP25 (1E36F-2A - MP10)



REF	CODIGO	DENOMINACION	QTA	COD-PROV	DENM-PROV
1	IP001	TORNILLO M5X12	1	GB/T67	SCREW M5X12
2	IP002	ARANDELA	1	1E40F-5. 11-2	WASHER
3	IP003	POLEA ARRANQUE	1	1E40F-5. 11-1	START ROPE REEL
4	NO DISPONIBLE	CUERDA	1	NOT AVAILABLE	RODE
5	IP005	ESPIRAL DEL ARRANQUE	1	1E40FP-3Z. 4-7	RECOIL SPRING
6	IP006	VOLUTA	1	1E40F-5. 11. 1	START COVER ASS' Y
7	IP007	EMPUÑADURA	1	1E40FP-3Z. 4-2	START HANDLE
8	IP008	ANILLO	1	1E40FP-3Z. 4-10	RING
9	IP009	TORNILLO M5X20	4	GB/T9074. 4-M5X20	SCREW M5X20
10	IP010	JUNTA	1	1E40F-5-10	GASKET
11	IP011	TUERCA M8	1	GB/T6170	NUT M8
12	IP012	GATILLO ARRANQUE	1	1E46FP. 4-2	START CLAW
13	IP013	MUELLE ARRANQUE	1	1E36F. 1. 2-2	START SPRING
14	IP014	POLEA	1	1E40F-5. 7-1	START REEL
15	IP015	ARANDELA	1	GB/T896	STOP RING 4
16	IP016	RETEN ACEITE	2	1E36F. 2	OIL-SEAL
17	IP017	CARTER	1	1E36F-2. 6-2	CRANK CASE
18	IP018	COJINETE 6201/P5	2	GB/T276-6201/P5	BEARING 6201/P5
19	IP019	CIGÜEÑAL	1	1E36F-2. 4. 3	CRANK SHAFT
20	IP020	LLAVE 3X5X13	1	GB/T1099	KEY 3X5X13
21	IP021	PIN B5X12	2	GB/T119-B5X12	PIN B5X12
22	IP022	ARANDELA DE GOMA	2	1E40F-5A-3	RUBBER WASHER
23	IP023	CARTER	1	1E36F-2. 6-1	CRANK CASE
24	IP024	PROTECTOR	1	1E36F-2-11	FLASH PAN
25	IP025	PIN B4X10	2	GB/T119-B4X10	PIN B4X10
26	IP026	SOPORTE	1	1E40F-5-15	STAND
27	IP027	TORNILLO M5X30	4	GB/T9074. 4-M5X30	SCREW M5X30
28	IP028	VOLANTE	1	VOLANO	MAGNETO ROTOR COMP.
29	IP029	TUERCA M8	1	GB/T6177-M8	NUT M8
30	IP204	BOBINA DE ENCENDIDO	1	NOT AVAILABLE	IGNITION COIL COMP.
31	IP031	ESPARRAGO	1	1E36F-2A. 8	CORD COMP.
32	IP032	PERNO	2	GB/T9074. 13-M5X20	BOLT M5X20

33	IP033	ARANDELA B	1	TL-1E36F-3	WASHERB
34	IP034	MUELLO	2	1E40F-5. 6-1	SPRING
35	IP035	SEPARADOR	2	1E40F-5. 6. 1	EXPANDER
36	IP036	ARANDELA	2	TL-1E40F-5-11	WASHER
37	IP037	TORNILLO	2	1E40F-5-12	SCREW PIN
38	IP038	VOLUTA	1	1E36F-2-8	FAN COVER
39	IP032	PERNO	4	GB/T9074. 13-M5X20	BOLT M5X20
40	IP040	CLIP	1	1E40F-3A. 9	CLIP
41	IP041	COJINETE	1	1E36F-2. 4. 1	BEARING
42	IP042	ANILLO	2	1E36F. 10-2	RING
43	IP043	PISTON	1	1E36F-2. 4. 2	PISTON
44	IP044	ANILLO RETENCION EJE	1	1E36F. 10-1	PISTON PIN
45	IP045	JUNTA	1	1E36F-2. 6-3	GASKET
46	IP046	ARO PISTON	2	1E36F. 10-3	PISTON RING
47	IP047	JUNTA	1	1E36F-2-6	GASKET
48	IP048	CILINDRO	1	1E36F-2-4	CYLINDER
49	IP049	TORNILLO M5X16	4	GB/T70. 1	SCREW M5X16
50	IP050	VOLUTA	1	1E36F-2. 5	GUIDE COVER ASS'Y
51	IP051	BUJIA	1	L6 (LD)	SPARK PLUG
52	NO DISPONIBLE	NO DISPONIBLE	1	NOT AVAILABLE	SPRING
53	NO DISPONIBLE	NO DISPONIBLE	1	NOT AVAILABLE	PLUG CAP
54	NO DISPONIBLE	NO DISPONIBLE	1	NOT AVAILABLE	CAP
55	IP055	ENCHUFE	1	1E40F-5. 3-1	PLUG
56	IP056	TAPA	1	1E36F-2-7	COVER
57	IP009	TORNILLO M5X20	1	GB/T9074. 4-M5X20	SCREW M5X20
58	IP058	JUNTA	1	1E36F-2-5	GASKET
59	IP059	SILENCIADOR	1	1E36F-2. 2	MUFFLER
60	IP060	TORNILLOS M5X12	1	GB/T9074. 4-M5X12	SCREW M5X12
61	IP060	TORNILLOS M5X12	1	GB/T9074. 4-M5X12	SCREW M5X12
62	IP062	ETIQUETA	1	1E36F-2-10	LABEL
63	IP063	PERNO	2	1E36F-2-9	BOLT
64	IP064	TUERMA M5	2	GB/T6177-M5	NUT M5
65	IP065	PROTECTOR SILENCIADOR	1	1E36F-2. 6	MUFFLER COVER

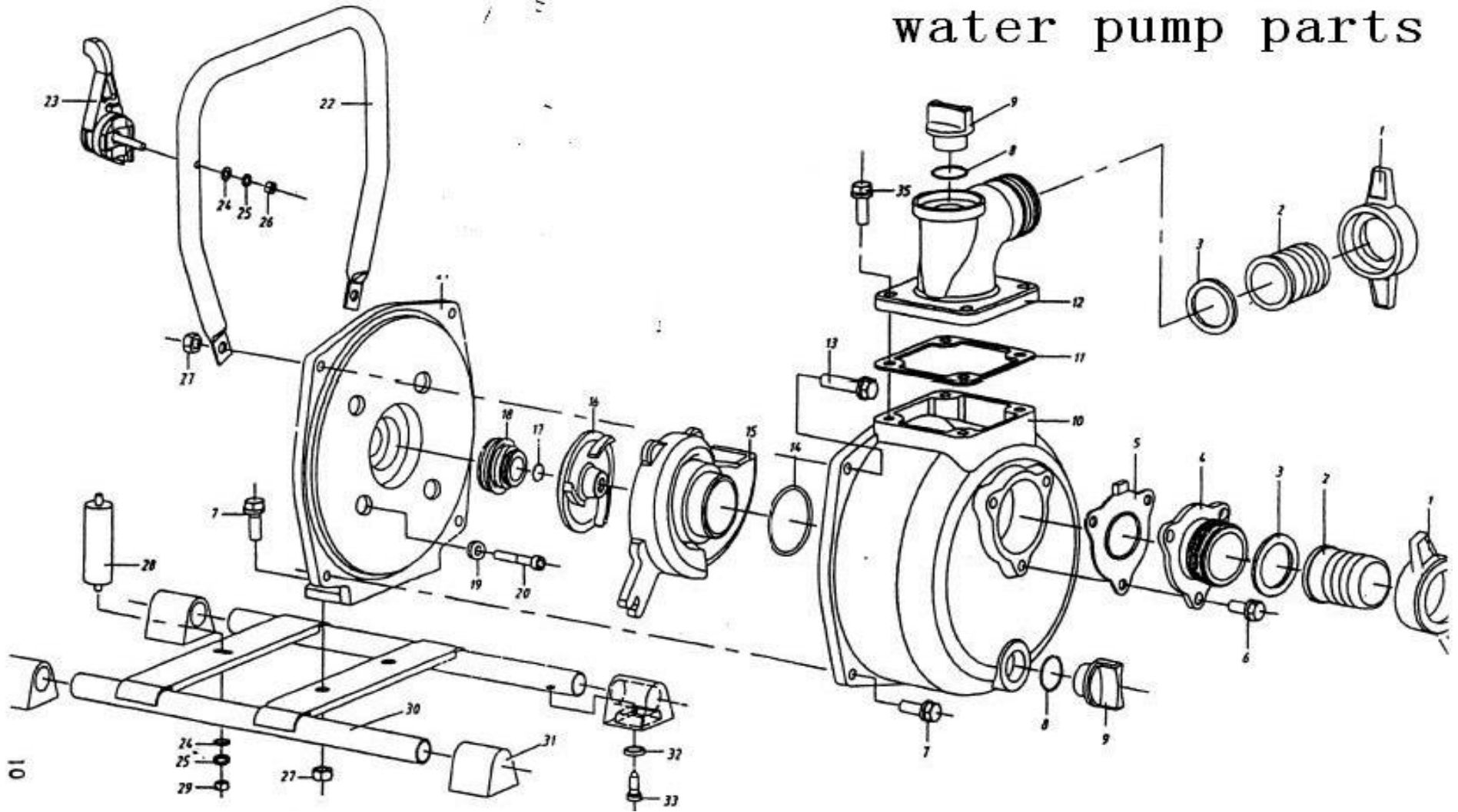
66	IP066	JUNTA	2	1E36F-2-2	GASKET
67	IP067	SEPARADOR	1	1E36F-2A-2	ADMITTING PIPE
68	IP068	JUNTA	1	1E36F-2A-1	GASKET
69	IP069	CARBURADOR	1	1E36F-2A. 1	CARBURETOR
70	IP070	EMPUÑADURA STARTER	1	1E34F. 1-2	CHOKER HANDLE
71	IP071	PARO	1	1E34F. 1-7	STOP RING
72	IP072	TUERNA 4	1	GB/T6172	NUT 4
73	IP073	SOPORTE FILTRO	1	1E34F. 1. 1	CLEANER INSIDE COVER
74	IP074	TORNILLO	2	GB/T9074. 4-M5X50	SCREW M5X50
75	IP075	CONJUNTO STARTER	1	1E40F-5. 11	STARTER
76	IP076	MARIPOSA ACEITE	1	1E34F. 1-3	CHOKER
77	IP077	TORNILLO ST4. 2X12	1	GB/T845	SCREW ST4. 2X12
78	IP078	FILTRO	1	1E34F. 1-1	FILTER NET
79	IP079	COVERTURA EXTERIOR FILTRO	1	1E34FA. 1-1	CLEANER OUTSIDE COVER
80	IP080	ETIQUETA	1	1E40F-3A. 3-5	LABEL
81	IP081	TORNILLO	1	1E34F. 1. 2	SCREW
82	IP082	TORNILLO M5X16	2	GB/T9074. 4-M5X16	SCREW M5X16
83	IP083	FILTRO	1	1E34F. 9. 2-3	CLEANER COVER
84	NO DISPONIBLE	TUBO COMBUSTIBLE	1	NOT AVAILABLE	FUEL PIPE
85	IP085	PASA TUBO GASOLINA	1	1E36FF. 8. 1-1	PLUG
86	NO DISPONIBLE	TUBO COMBUSTIBLE	1	NOT AVAILABLE	FUEL PIPE
87	IP087	DEPOSITO DE COMBUSTIBLE	1	1E40F-2A. 7-1	FUEL TANK
88	IP088	TAPON DEPOSITO COMBUSTIBLE	1	EB-415. 4. 1. 1-2	FUEL TANK LID
89	IP089	ARANDELA CHAPA	1	EB-415. 4. 1. 1-1	INLET
90	IP090	SOPORTE	1	EB415. 4. 1. 1-3	STAND
91	IP091	JUNTA	1	EB415. 4. 1. 1-2	GASKET
92	IP092	CONJUNTO TAPON	1	EB415. 4. 1	LID ASS' Y
93	IP093	SOPORTE	1	1E40F-5A. 3	STAND
94	IP094	TORNILLO M5X30	2	GB/T9074. 13-M5X30	SCREW M5X30
95	IP095	SOPORTE	1	1E40F-5A-4	STAND
96	IP096	COBERTURA DE GOMA	1	1E40F-5A-2	RUBBER COVER
97	IP203	EJE PROLONGACIÓN MOTOBOMBA	1		EXTENSION SHAFT MOTOR PUMP
	100025601	PARO MOTOR	1	100025601	MOTOR ENGINE

BOMBA IPUMP25 (MP10)

Attached Fig

WP-10C

water pump parts



REF	CODIGO	DENOMINACION	QTA	COD-PROV	DENM-PROV
1	IP097	JUNTA DE MANGUERA	2	QGZ25-30. 4-1	HOSE JOINT
2	IP098	ACOPLAMIENTO MANGUERA	2	QGZ25-30. 4-3	HOSE COUPLING
3	IP099	JUNTA	2	QGZ25-30. 4-2	PACKING (PLUG)
4	IP100	VÁLVULA DE ASPIRACIÓN	1	QGZ25-30-6	VALVE CASE
5	IP101	VÁLVULA	1	QGZ25-30.2	CHECK VALVE
6	IP102	PERNO W /S. W M6X20	3	GB9074. 15-M6X20	BOLT W /S. W M6X20
7	IP103	PERNO W /S. W M8X20	4	GB9074. 15-M8X20	BOLT W /S. W M8X20
8	IP104	JUNTA TAPÓN	2	GB3452. 1	O-SEALING RING
9	IP105	TAPÓN	2	QGZ25-30-9	PLUG
10	IP106	CUERPO BOMBA	1	QGZ25-30-3	PUMP CASE
11	IP107	JUNTA	1	QGZ25-30-8	PACKING
12	IP108	CODO DE IMPULSIÓN	1	QGZ25-30-7	BEND
13	IP109	PERNO W /S. W M8X30	2	GB9074. 15-M8X30	BOLT W /S. W M8X30
14	IP110	JUNTA TÓRICA	1	GB3452. 1	O-SEALING RING
15	IP111	DIFUSOR	1	QGZ25-30-5	VOLUTE SHELL
16	IP112	TURBINA	1	QGZ25-30-4	IMPELLER
17	IP113	ANILLO DE CIERRE	1	GB3452. 1	O-SEALING RING
18	IP114	SELLO MECÁNICO	1	QGZ40-35. 4	MECHANICAL SEAL
19	IP115	ARANDELA	4	QGZ40-35-8	SEAL PACKING
20	IP116	TORNILLOS M6X40	4	GB70	SCREW M6X40
21	IP117	SOPORTE BOMBA	1	QGZ25-30-2	CASING COVER
22	IP118	ASA	1	QGZ25-30-10	HANDLE
23	IP119	PALANCA ACELERADOR	1	QGZ40-35. 10	THROTTLE LEVER
24	IP120	ARANDELA	2	GB97. 1	WASHER
25	IP121	ARANDELA	2	GB93	WASHER SPRING
26	IP122	TUERCA M5	1	GB889	NUT M5
27	IP123	TUERCA M8	4	GB6170-M8	NUT M8
28	IP124	SOPORTE GOMA	1	QGZ40-35A. 3	RUBBER PILLAR
29	IP125	TUERCA M5	1	GB6170-M5	NUT M5
30	IP126	BASE	1	QGZ40-35A. 1	BASE
31	IP127	PROTECTORES DE GOMA ANTIVIBRACIÓN	4	QGZ40-35-5	UNTI VIBRATION RUBBER
32	IP128	ARANDELA	4	GB96	WASHER

33	IP129	TORNILLOS ST4. 2X13	4	GB845	SCREW ST4. 2 X13
34	NO DISPONIBLE	MOTOR	1	NOT AVAILABLE	ENGINE
35	IP102	PERNO W/S. W M6X20	4	GB9074. 15-M6X20	BOLT W /S. W M6X20