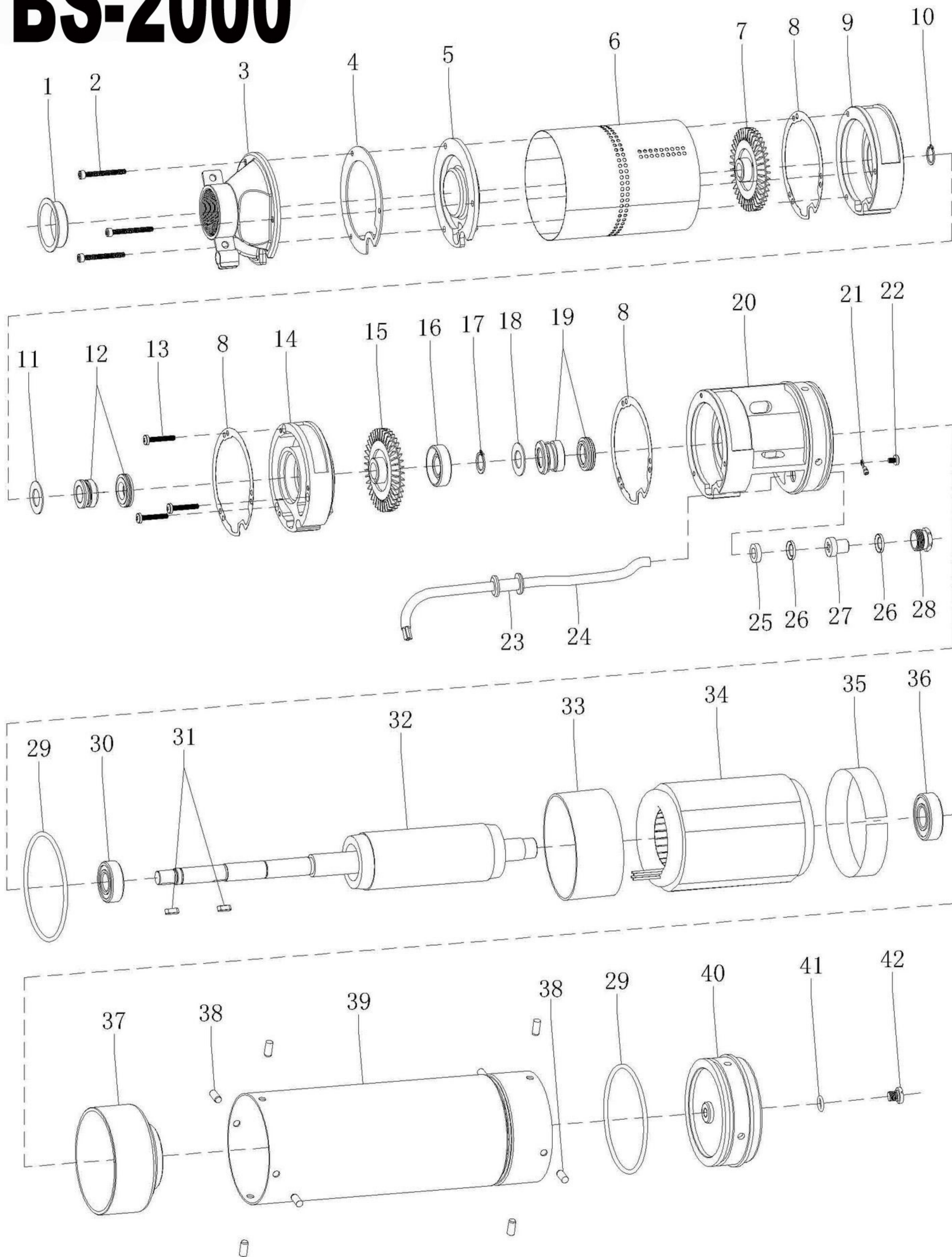


# BS-2000



# **BS-2000**

<b>N.FIGURA</b>	<b>REFERENCIA</b>	<b>D E N O M I N A C I O N</b>	<b>CANTIDAD</b>
1	<b>BS1000-1</b>	TAPON	2
2	<b>BS2000-2</b>	TORNILLO	2
3	<b>BS1000-3</b>	CUERPO IMPULSION	1
4	<b>BS1000-4</b>	JUNTA	2
5	<b>BS2000-5</b>	TAPA BOMBA	1
6	<b>BS2000-6</b>	CAMISA EXTERNA SUPERIOR	1
7	<b>BS2000-7</b>	RODETE	1
8	<b>BS1000-12</b>	JUNTA	2
9	<b>BS2000-9</b>	CUERPO INTERMEDIO	1
10	<b>BS2000-10</b>	CIRCLIP	1
11	<b>BS2000-11</b>	JUNTA	1
12	<b>BS2000-12</b>	SELLO MECANICO	4
13	<b>BS2000-13</b>	TORNILLO	1
14	<b>BS2000-14</b>	CUERPO BOMBA	1
15	<b>BS2000-15</b>	RODETE	4
16	<b>BS2000-16</b>	RETEN	1
17	<b>BS2000-17</b>	CIRCLIP	1
18	<b>BS2000-18</b>	ARANDELA	1
19	<b>BS2000-19</b>	SELLO MECANICO	1
20	<b>BS2000-20</b>	SUPOTE SUPERIOR	1
21	<b>BS1000-14</b>	CONEXIÓN	1
22	<b>BS1000-15</b>	TORNILLO	2
23	<b>BS1000-18</b>	PASACABLES	2
24	<b>BS2000-24</b>	CABLE	1
25	<b>BS1000-20</b>	ANILLO GUARDA CABLE	1
26	<b>BS1000-23</b>	JUNTA BRONCE	1
27	<b>BS1000-22</b>	PASACABLES	1
28	<b>BS1000-24</b>	TUERCA	1
29	<b>BS1000-16</b>	JUNTA TORICA	1
30	<b>BS2000-30</b>	COJINETE	1
31	<b>BS1000-25</b>	CHAVETA	2
32	<b>BS2000-32</b>	ROTOR	2
33	<b>BS2000-33</b>	SUPOTE SUPERIOR	2
34	<b>BS2000-34</b>	STATOR	n
35	<b>BS2000-35</b>	AISLANTE	n
36	<b>BS2000-36</b>	COJINETE	n
37	<b>BS2000-37</b>	SOPORTE COJINETE INFERIOR	x
38	<b>BS1000-32</b>	FIJO	1
39	<b>BS2000-39</b>	CAMISA EXTERNA MOTOR	1
40	<b>BS1000-34</b>	SOPORTE COJINETE INFERIOR	1
41	<b>BS1000-35</b>	JUNTA TORICA	1
42	<b>BS1000-36</b>	TAPON	4
	<b>BS2000-CB</b>	CUADRO ELECTRICO 220V BS2000	1