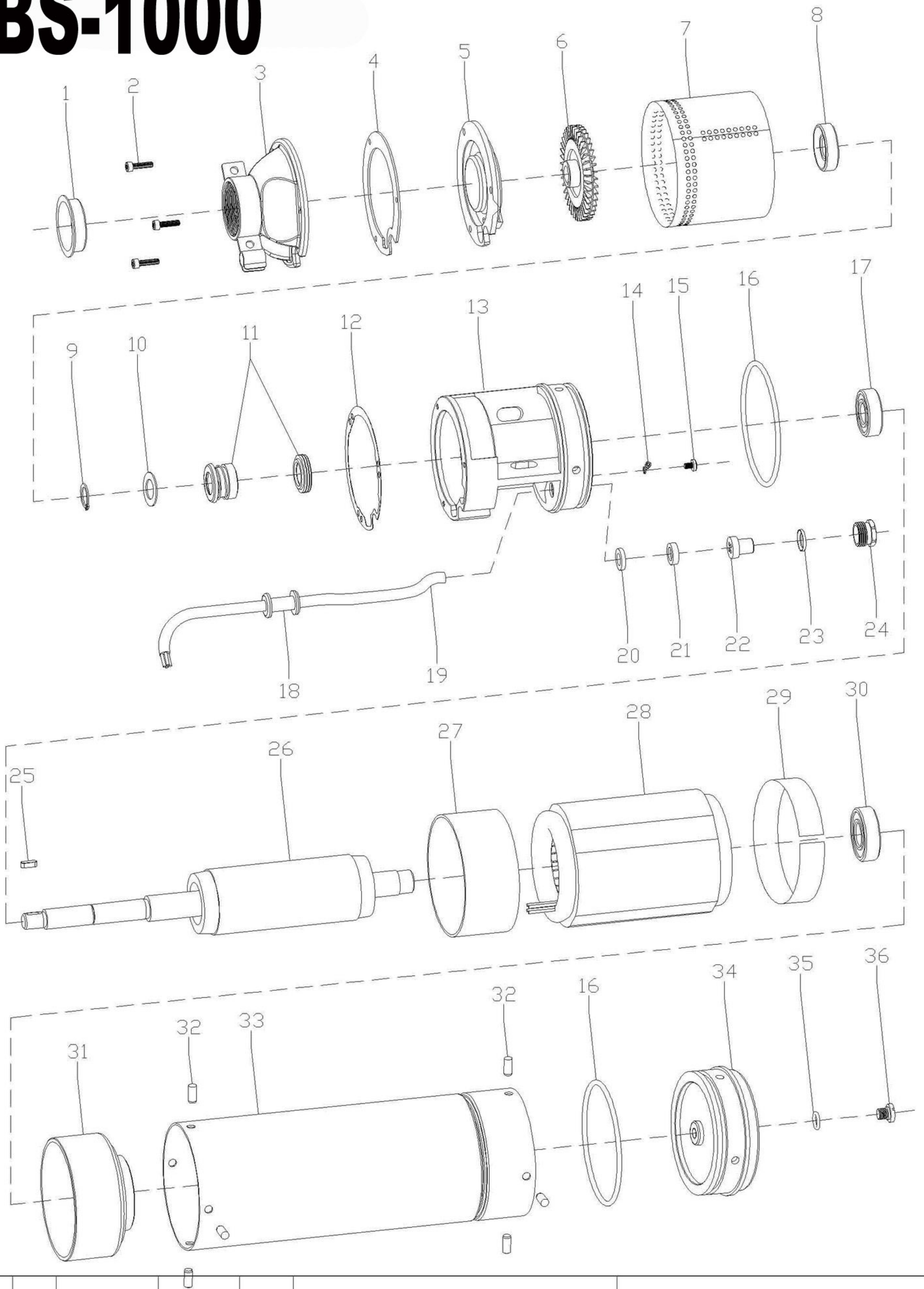


BS-1000



BS-1000

N.FIGURA	REFERENCIA	D E N O M I N A C I O N	CANTIDAD
1	BS1000-1	TAPON	1
2	BS1000-2	TORNILLO	1
3	BS1000-3	CUERPO IMPULSION	1
4	BS1000-4	JUNTA	1
5	BS1000-5	CUERPO BOMBA	1
6	BS1000-6	RODETE	1
7	BS1000-7	CAMISA EXTERNA SUPERIOR	1
8	BS1000-8	RETEN	1
9	BS1000-9	CIRCLIP	1
10	BS1000-10	JUNTA	1
11	BS1000-11	SELLO MECANICO	1
12	BS1000-12	JUNTA	1
13	BS1000-13	SUPORE SUPERIOR	1
14	BS1000-14	CONEXIÓN	
15	BS1000-15	TORNILLO	1
16	BS1000-16	JUNTA TORICA	2
17	BS1000-17	COJINETE	1
18	BS1000-18	PASACABLES	1
19	BS1000-19	CABLE	1
20	BS1000-20	ANILLO GUARDA CABLE	1
21	BS1000-21	JUNTA	1
22	BS1000-22	PASACABLES	1
23	BS1000-23	JUNTA BRONCE	1
24	BS1000-24	TUERCA	1
25	BS1000-25	CHAVETA	1
26	BS1000-26	ROTOR	1
27	BS1000-27	SUPORE SUPERIOR	1
28	BS1000-28	STATOR	1
29	BS1000-29	AISLANTE	1
30	BS1000-30	COJINETE	1
31	BS1000-31	SOPORTE COJINETE INFERIOR	1
32	BS1000-32	FIJO	8
33	BS1000-33	CAMISA EXTERNA MOTOR	1
34	BS1000-34	SOPORTE COJINETE INFERIOR	1
35	BS1000-35	JUNTA TORICA	1
36	BS1000-36	TAPON	1
	BS1000-CB	CUADRO ELECTRICO 220V	1