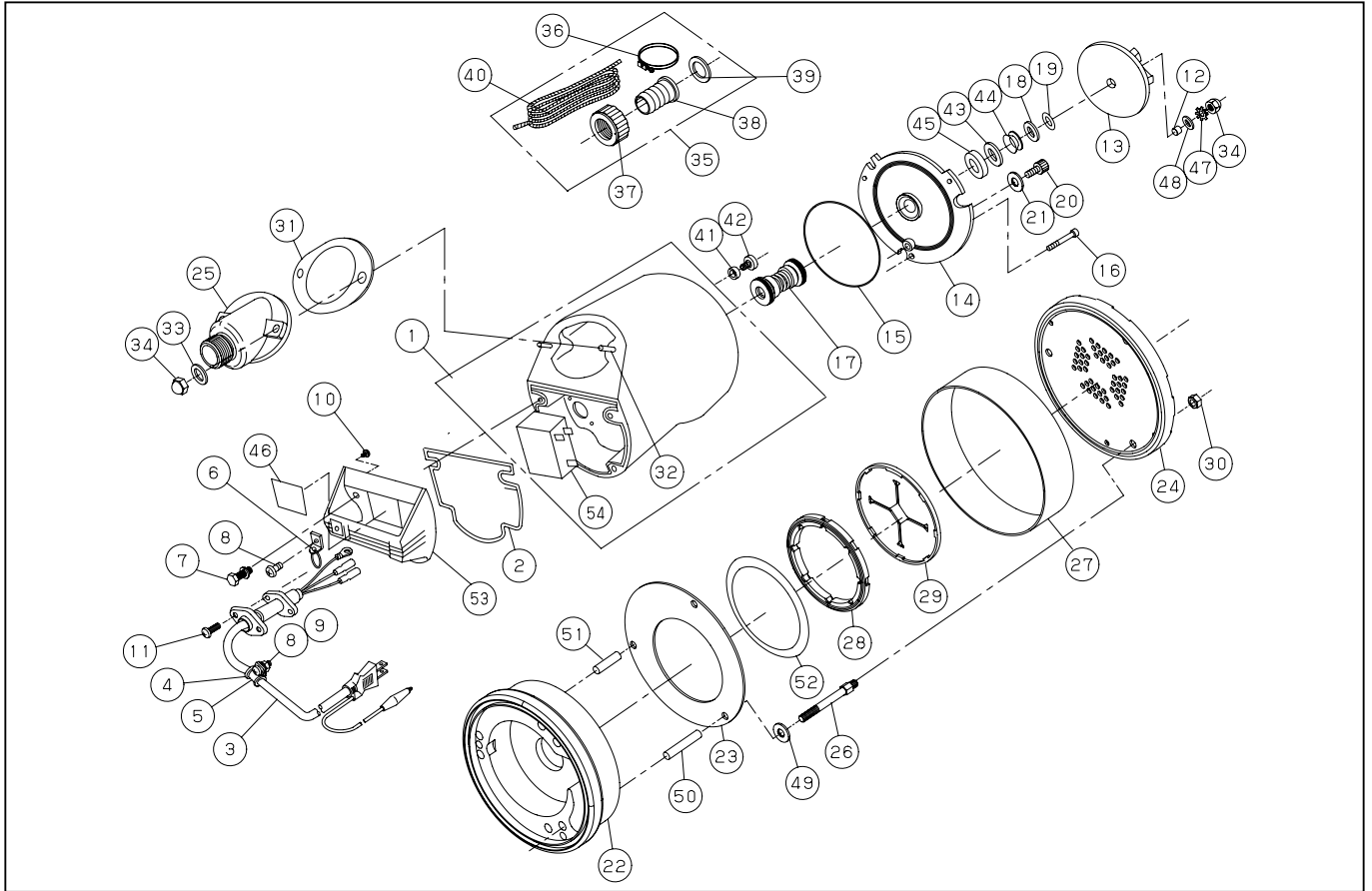


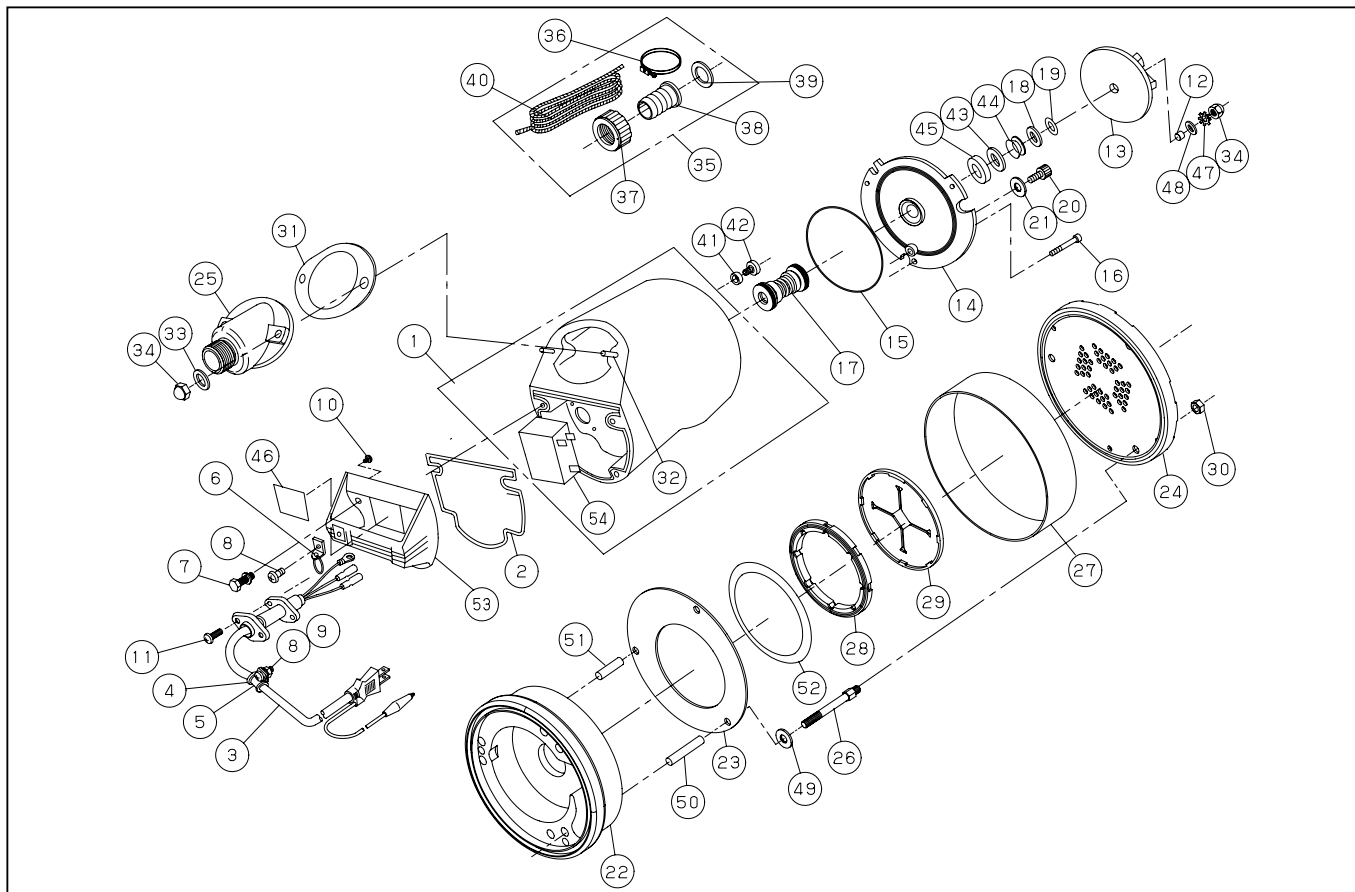
PXL-52522



DWG No.043857110 MODEL:PXL-52522 FORM:PXL-52522-BAA-0

No.	PARTS CODE	PARTS NAME	QTY	MATERIAL	SIZE	REMARKS
1	043809702	MOTOR ASSY	1			
2	043040101	HEAD PACKING	1			
3	043028901	POWER CORD ASSY	1		5M	
4	039003101	CORD SUPPORTER	1			
5	026001801	CORD BAND	1			
6	043809201	CHAIN AASY	1			
7	043040601	HEXAGON BOLT	4	SUS	M6X18	
8	039048301	+ SCREW	2	SUS	M5X10	
9	043040901	HEXAGON NUT	1	SUS	M5	
10	043041001	+ SCREW	1	SWRM	M4X6	
11	043041101	+ SCREW	2		M5X14	
12	043044101	IMPELLER FIXING BUSH	1	SUS		
13	043028505	IMPELLER	1			
14	043027103	FRONT COVER	1	ADC		
15	889955125	O-RING	2	NBR	G125	
16	734505037	HEXAGON SOCKET BOLT	3	SUS	M5X20	
17	039000301	MECHANICAL SEAL	1	DE560		
18	043030001	IMPELLER WASHER	1	SUS		
19	039002501	IMPELLER ADJUSTING WASHER	2	SUS		
20	039003702	HEXAGON SOCKET BOLT	1	SUS	M10X12	
21	854255010	SEAL WASHER	1		φ 10	
22	043033401	CASING	1			
23	043032901	SUCTION	1	SUS	T=2.5	
24	043024101	STRAINER	1	NBR+SUS		
25	043035002	DELIVERY FLANGE	1	ADC		
26	043024201	STUD BOLT	3	SUS		
27	043023601	STRAINER STAND	1	SPCC	T=2.5	
28	043023901	SEAL RING	1	NBR		
29	043033101	ONE WAY CHECK VALVE	1	NBR		
30	827405008	HEXAGON NUT	3	SUS	M8	

PXL-52522



DWG No.043857110 MODEL:PXL-52522 FORM:PXL-52522-BAA-0

No.	PARTS CODE	PARTS NAME	QTY	MATERIAL	SIZE	REMARKS
31	043028301	DELIVERY PACKING	1	NBR		
32	043029001	STUD BOLT	2		M8X36X11/21	
33	846005008	WASHER	2	SUS	φ 8	
34	835305008	HEXAGON CAP NUT	3	SUS	M8	
35	043808002	ACCESSORIES SET	1			
36	940019032	HOSE BAND	1		φ 32	
37	034078101	COUPLING	1	ABS		
38	034078201	HOSE NIPPLE	1	ABS		
39	034006501	COUPLING PACKING	1	CR		
40	039010101	ROPE	1		5M	
41	034014202	SEAL RING	1	NBR		
42	034015301	+ SCREW	1	SUS	M6X8	
43	043030101	THRUST WASHER	1	SUS		
44	895154014	OIL SEAL	1		VR14A	
45	043029901	THRUST PACKING	1	CR		
46	043037101	LABEL	1			
47	845305008	TOOTHED WASHER	1	SUS	8B	
48	846505008	WASHER	1	SUS	φ 8-1.6	
49	854255008	SEAL WASHER	3		φ 8	
50	043036101	LONG PIPE	2	SUS		
51	043036201	SHORT PIPE	1	SUS		
52	043036001	SUCTION PACKING	1	NBR		
53	043040401	HANDLE	1			
54	043039301	CONDENSER	1			
	039038301	PARAFFIN OIL		230cc		@160/100cc
	043036901	PACKING CASE	1			
	043036802	OPERATION MANUAL	1			
	043029702	LABEL	1			
	043031102	CAUTION LABEL	1			