

EURO I

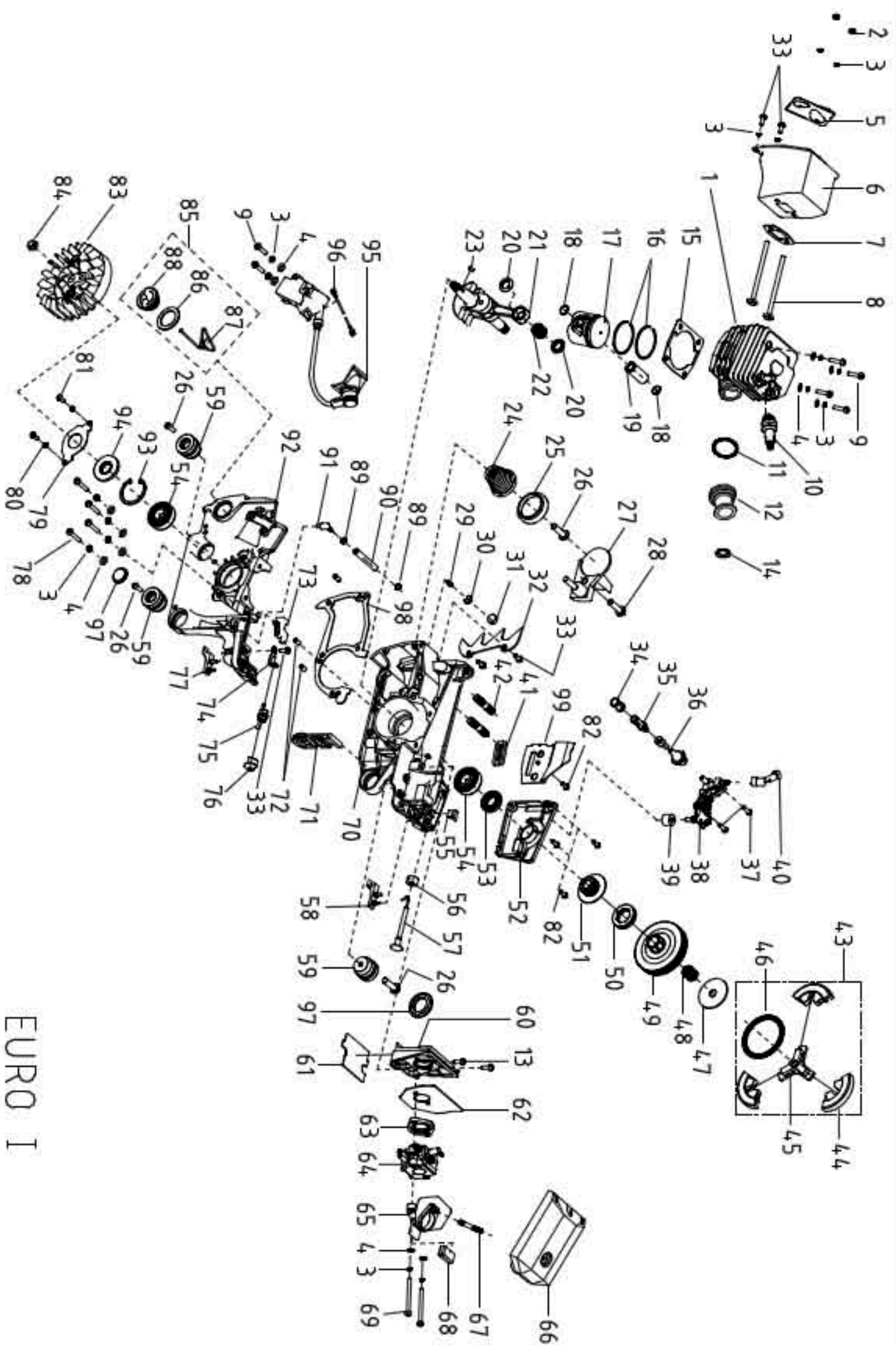
YD-KU01-50A(base unit)

**Fig 1 YD-KU01-50A BASE PART**

|    |                 | ITEM                     | qty | BOM No.         |
|----|-----------------|--------------------------|-----|-----------------|
| 1  | YD50.04.00-00   | right cover assembly     | 1   | 05.01.04.0990   |
| 2  | YD38-3.04.00-16 | screw M5×40              | 1   | 01.01.4151      |
| 3  | YD38-3.04.00-13 | shield pipe              | 1   | 06.06.020       |
| 4  | YD38-3.04.00-12 | pipe                     | 1   | 06.06.207       |
| 5  | GB/T119.2       | pin 3×14                 | 1   | 01.05.0171      |
| 6  | YD45.04.00-18   | tightener screw          | 1   | 06.06.255       |
| 7  | YD45.04.00-19   | tension block            | 1   | 06.06.200       |
| 8  | YD45.04.00-11   | tensioner cover plate    | 1   | 06.02.103       |
| 9  | GB/T845         | tapping screw ST4.2 ×9.5 | 4   | 01.01.1391      |
| 10 | YD45-4.04.00-2  | front damper             | 1   | 04.01.10.01906* |
| 11 | YD38-3.04.00-8  | brake torsion rod spring | 1   | 06.03.064       |
| 12 | YD45-3.04.00-10 | washer 5.2×20×1.2        | 1   | 06.02.111       |
| 13 | GB/T6183.1      | nut M5                   | 1   | 01.03.0113      |
| 14 | YD38-3.04.00-6  | spring base              | 1   | 06.02.013       |
| 15 | YD38-3.04.00-5  | front damper spring      | 1   | 06.03.051       |
| 16 | YD38-3.04.00-4  | main level               | 1   | 04.01.04.09908  |
| 17 | YD38-3.04.00-3  | secondary pull-rod       | 1   | 04.01.04.01808  |
| 18 | GB/T119.2       | pin 3×9                  | 3   | 01.05.0161      |
| 19 | YD45.04.00-14   | brake control rod        | 1   | 06.02.079       |
| 20 | YD45.04.00-9    | brake spring             | 1   | 06.03.059       |
| 21 | YD45-4.04.00-10 | brake strap              | 1   | 06.03.057       |
| 22 | YD45-4.04.00-1  | brake spring cover plate | 1   | 04.01.10.02006  |
| 23 | YD45.04.00-20   | tension block            | 1   | 06.06.161       |
| 24 | YD45.01.00-16   | chain guide block        | 1   | 04.01.07.03306  |
| 25 | YD45-4.04.01-00 | right cover              | 1   | 04.01.10.02901* |
| 26 | YD45 .04. 00-10 | secondary brake spring   | 1   | 06.03.062       |
| 27 | YD45-4.04.00-7  | dust shield              | 1   | 03.01.2.109     |
| 28 | YD38-3.04.00-7  | heavy block spring       | 1   | 06.03.080       |
| 29 | YD38-3.04.02-00 | heavy block              | 1   | 04.01.04.09806  |
| 30 | GB/T6177.1      | nut M8                   | 2   | 01.03.0052      |
| 31 | YD45.05.01-00   | air filter lock nut      | 1   | 04.01.07.06806  |
| 32 | YD45.05.00-2    | lock nut washer 15×26×1  | 1   | 03.01.2.056     |
| 33 | YD45-4.05.00-1  | air filter cover         | 1   | 04.01.10.00201* |
| 34 | YD45-4.00.00-6  | idle adjusting guide set | 1   | 03.01.2.009     |
| 35 | GB/T2672        | screw M5×16              | 9   | 01.01.3111      |
| 36 | YD45-4.00.00-1  | upper cover plate        | 1   | 04.01.10.02101* |
| 37 | YD45-4.02.00-1  | guide flow cover         | 1   | 04.01.10.00106  |
| 38 | YD45-4.02.00-00 | starter assembly         | 1   | 05.01.04.0586*  |
| 39 | GB/T845         | tapping screw M4.8×14    | 1   | 01.01.4111      |

**Fig 1 YD-KU01-50A BASE PART**

|    |                 | ITEM                       | qty | BOM No.         |
|----|-----------------|----------------------------|-----|-----------------|
| 40 | GB/T96          | washer 5                   | 1   | 01.04.0161      |
| 41 | YD45.02.00-2    | starter plate              | 1   | 04.01.07.07308  |
| 42 | YD45.02.00-5    | start coil spring          | 1   | 06.03.050       |
| 43 | YD38-5.02.00-4  | start handle               | 1   | 04.01.06.05109* |
| 44 | YD45.02.00-7    | start stretching wire      | 1   | 04.03.0001608   |
| 45 | YD45.04.00-8    | LH sheathing               | 1   | 03.01.2.005     |
| 46 | YD45-4.02.01-00 | starter cover              | 1   | 04.01.10.01001* |
| 47 | YD45. 03. 00-1  | shock rubber               | 1   | 03.01.2.044     |
| 48 | YD45.03.01-00   | base                       | 1   | 04.01.07.03501  |
| 49 | YD45.03.02-00   | shock rubber gland         | 2   | 03.01.1.001     |
| 50 | YD50.00.00-9    | screw                      | 2   | 06.06.219       |
| 51 | YD45.00-00-2    | dust cover                 | 2   | 04.01.04.08706  |
| 52 | YD38-3.03.02-00 | petrol cap assembly        | 1   | 05.01.04.0269*  |
| 53 | YD38-3.03.02-2  | anti-drop plate            | 1   | 04.01.07.04408  |
| 54 | YD38-3.03.02-3  | packing washer 24x34x1.5   | 1   | 03.01.2.059     |
| 55 | YD38-3.03.02-1  | petrol cover               | 1   | 04.01.07.09706  |
| 56 | YD45.03.00-2    | fuel tube                  | 1   | 03.01.2.065     |
| 57 | YD45.03.00-15   | fuel tube circlip          | 1   | 06.03.098       |
| 58 | YD45.03.03-00   | petrol filter componets    | 1   | 04.01.07.08406* |
| 59 |                 | balancer                   | 1   | 04.01.07.07208* |
| 60 | YD38-3.03.00-3  | balancer root              | 1   | 03.01.2.063     |
| 61 | YD45.03.00-25   | throttle rod               | 1   | 06.03.076       |
| 62 | YD45.03.00-11   | trigger                    | 1   | 04.01.07.02206  |
| 63 | YD45.03.00-12   | trigger torsion rod spring | 1   | 06.03.007       |
| 64 | GB/T119.2       | pin6x22                    | 1   | 01.05.0181      |
| 65 | YD45.03.00-14   | handle cover               | 1   | 04.01.07.11906  |
| 66 | YD45.03.00-13   | trigger control rack       | 1   | 04.01.07.03006* |
| 67 | GB/T845         | tapping screw ST4.2x25     | 1   | 01.01.3171      |
| 68 | YD45-2.06.00-00 | front handle assembly      | 1   | 06.06.150       |
| 69 | GB/T845         | tapping screw M4.8x16      | 4   | 01.01.3161      |
|    |                 |                            |     |                 |
|    |                 |                            |     |                 |
|    |                 |                            |     |                 |
| 70 | YD45-4.03.00-11 | scavenge nozzle            | 1   | 03.01.2.140     |
| 71 | YD45-4.03.00-13 | pump tube                  | 1   | 03.01.2.004     |
| 72 | YD38-3.00.00    | Primer bulb                | 1   | 04.01.04.08908  |



EURO I

YD-KU01-50A engine unit

**Fig 2 YD-KU01-50A ENGINE PART**

| 编号 | 代号               | ITEM                      | qty | BOM No.        |
|----|------------------|---------------------------|-----|----------------|
| 1  | YD50.01.02-1     | cylinder                  | 1   | 05.01.02.011   |
| 2  | GB/T6170         | nut M5                    | 2   | 01.03.0091     |
| 3  | GB/T93           | washer 5                  | 17  | 01.04.0091     |
| 4  | GB/T97.1         | washer 5                  | 13  | 01.04.0121     |
| 5  | YD45.01.09-1     | muffler cover plate       | 1   | 06.02.096      |
| 6  | YD45.01.09.01-00 | muffler body              | 1   | 06.06.165      |
| 7  | YD45.01.00-2     | muffler sealing plate     | 1   | 08.023         |
| 8  | YD45.01.00-24    | muffler connecting screw  | 2   | 06.06.227      |
| 9  | GB/T6191         | screw M5×20               | 6   | 01.01.2141     |
| 10 | YD45.01.11.04-00 | spark plug                | 1   | 02.35.08       |
| 11 | YD50.01.02.03    | spring                    | 1   | 06.03.072      |
| 12 | YD50.01.02.02    | air intake tube           | 1   | 03.01.2.003    |
| 13 | GB/T2672         | screw M5×12               | 2   | 01.01.3181     |
| 14 | YD45.01.00-17    | hold coil                 | 1   | 06.02.006      |
| 15 | YD45.01.00-1     | cylinder sealing plate    | 1   | 08.017         |
| 16 | YD50.01.03-2     | piston ring               | 2   | 06.06.092      |
| 17 | YD50.01.03.00-00 | piston                    | 1   | 06.06.085      |
| 18 | YD45.01.03-4     | piston pin circlip        | 2   | 06.03.032      |
| 19 | YD50.01.03-3     | piston pin                | 1   | 06.06.100      |
| 20 | YD45.01.03-5     | needle bearing ring       | 2   | 06.06.055      |
| 21 | YD45.01.03.01-00 | crank shaft components    | 1   | 06.05.011      |
| 22 | YD45.01.03.02-00 | needle bearing 11×15×12.5 | 1   | 01.05.1130     |
| 23 | GB/T1099         | semicircular key 3×3.5×10 | 1   | 01.06.0031     |
| 24 | YD45.00.00-4     | conical spring base       | 1   | 06.03.082      |
| 25 | YD45.00.00-3     | conical spreader base     | 1   | 04.01.07.13206 |
| 26 | GB/T845          | tapping screw ST4.8×16    | 4   | 01.01.3161     |
| 27 | YD45.00.00.01-00 | chain shield              | 1   | 04.01.07.07006 |
| 28 | GB/T2672         | screw M5×16               | 1   | 01.01.3111     |
| 29 | YD45.01.01.02-2  | aeration jet              | 1   | 03.01.2.098    |
| 30 | YD45.01.01.02-3  | aeration jet circlip      | 1   | 06.03.069      |
| 31 | YD45.01.00-22    | sponge transition block   | 1   | 12.02.0002     |
| 32 | YD45.01.00-21    | pinion rack               | 1   | 06.02.012      |
| 33 | GB/T2672         | screw M5×10               | 5   | 01.01.3101     |
| 34 | YD45.01.00.04-2  | oil filter screen         | 1   | 04.01.07.05608 |
| 35 | YD45.01.00.04-1  | oil filter                | 1   | 06.06.115      |
| 36 | YD45.01.00-12    | oil tube                  | 1   | 03.01.2.034    |
| 37 | GB/T2672         | screw M4×14               | 2   | 01.01.3071     |
| 38 | YD45.01.15-00    | oil pump                  | 1   | 06.06.001      |

**Fig 2 YD-KU01-50A ENGINE PART**

| 编号 | 代号               | ITEM                                | qty | BOM No.        |
|----|------------------|-------------------------------------|-----|----------------|
| 39 | YD45.01.00-23    | sponge transition coil              | 1   | 12.02.0001     |
| 40 | YD45.01.00-13    | nozzle                              | 1   | 03.01.2.061    |
| 41 | YD45.01.00-16    | chain guide block                   | 1   | 04.01.07.03306 |
| 42 | GB/T900          | double-screw bolt AYM8-M8×26-8.8    | 2   | 01.02.1061     |
| 43 | YD45.01.13.01-00 | clutch                              | 1   | 05.01.04.0034  |
| 44 | YD45.01.13.01-2  | shoe block                          | 3   | 06.01.016      |
| 45 | YD45.01.13.01-1  | retainer                            | 1   | 06.01.004      |
| 46 | YD45.01.13.01-3  | clutch spring                       | 1   | 06.03.047      |
| 47 | YD45.01.00-19    | clutch adjusting washer             | 1   | 06.02.061      |
| 48 | YD45.01.00.10-00 | needle bearing 12×15×14.5           | 1   | 01.05.1140     |
| 49 | YD45.01.13-1     | clutch shell                        | 1   | 06.05.014      |
| 50 | YD45.01.00-26    | sprocket                            | 1   | 06.06.126      |
| 51 | YD45.01.00.06-00 | worm                                | 1   | 04.01.07.12208 |
| 52 | YD45.01.00-15    | cover plate                         | 1   | 04.01.07.05406 |
| 53 | YD45.01.00.09-00 | oil seal 15×28×4.5                  | 1   | 03.01.2.086    |
| 54 | GB/T276          | bearing 6202D grade 15×35×11        | 2   | 01.05.1260     |
| 55 | YD45.01.00-8     | cushion block                       | 1   | 03.01.2.042    |
| 56 | YD45.01.00-7     | choke rod fixation root             | 1   | 03.01.2.021    |
| 57 | YD45.01.00.03-00 | choke rod                           | 1   | 04.01.07.05006 |
| 58 | YD45.01.00-11    | right shock block                   | 1   | 03.01.2.093    |
| 59 | YD45.01.00.07-00 | shock seat                          | 3   | 03.01.2.047    |
| 60 | YD45.01.00.01-00 | air intake tube support             | 1   | 04.01.07.05806 |
| 61 | YD45.01.00-4     | tie plate                           | 1   | 08.006         |
| 62 | YD45.01.00-3     | sealing plate of air intake support | 1   | 08.014         |
| 63 | YD45.01.00-14    | air intake tube flange              | 1   | 04.01.07.05706 |
| 64 | YD45.01.06-00    | carburetor                          | 1   | 06.06.137*     |
| 65 | YD45.01.00.02-00 | air intake socket                   | 1   | 06.06.090*     |
| 66 | YD45.01.08-00    | air filter                          | 1   | 04.01.07.05908 |
| 67 | GB/T899          | double-screw bolt GM5-M5×30         | 1   | 01.02.1081     |
| 68 | YD45.01.00-5     | cushion of air intake socket        | 1   | 06.06.114      |
| 69 | GB/T2672         | screw M5×50                         | 2   | 01.01.3021     |
| 70 | YD45.01.01.02-1  | right case                          | 1   | 05.01.01.161   |
| 71 | YD45.01.00-6     | dust plate                          | 1   | 03.01.2.019    |
| 72 | GB/T119.2        | pin 5×10                            | 3   | 01.05.0071     |
| 73 | YD45.01.00-27    | guide sleeve                        | 1   | 04.01.07.13608 |
| 74 | YD45.01.11-2     | ground strip                        | 1   | 06.02.053      |
| 75 | YD45.01.11.03-00 | flameout switch                     | 1   | 02.05.17*      |
| 76 | YD45.01.11-1     | flameout switch socket              | 1   | 03.01.2.079    |

**Fig 2 YD-KU01-50A ENGINE PART**

|    |                    |                         | qty | BOM No.         |
|----|--------------------|-------------------------|-----|-----------------|
| 77 | YD45.01.00-10      | left shock block        | 1   | 03.01.2.095     |
| 78 | GB/T6191           | screw M5x25             | 5   | 01.01.3801      |
| 79 | YD45.01.00-20      | oil shield              | 1   | 06.02.098       |
| 80 | GB/T2672           | screw M4x8              | 2   | 01.01.3091      |
| 81 | GB/T93             | washer 4                | 2   | 01.04.0191      |
| 82 | GB/T2672           | screw M4x10             | 4   | 01.01.3061      |
| 83 | YD45.01.10.01-00a  | flywheel assembly       | 1   | 02.36.02*       |
| 84 | GB/T6177.2         | nut M8x1                | 1   | 01.03.0073      |
| 85 | YD38-3.03.03-00    | oil cap assembly        | 1   | 05.01.04.0272*  |
| 86 | YD45.01.00.05-3    | sealing washer20x30x2   | 1   | 03.01.2.058     |
| 87 | YD45.01.00.05-2    | anti-drop plate         | 1   | 04.01.07.04408  |
| 88 | YD45.01.00.05-1    | oil cover               | 1   | 04.01.07.05506* |
| 89 | YD45.01.01.01-3    | suction tube circlip    | 2   | 06.03.025       |
| 90 | YD45.01.01.01-2    | suction tube 2.5x6x105  | 1   | 03.01.2.024     |
| 91 | YD45.01.01.03-00   | suction jet             | 1   | 04.01.07.13306  |
| 92 | YD45.01.01.01-1    | left case               | 1   | 05.01.01.160    |
| 93 | GB/T893.1          | shield ring 35          | 1   | 01.04.1011      |
| 94 | YD45.01.00.08-00   | oil seal 15x35x4.5      | 1   | 03.01.2.087     |
| 95 | YD45.01.11.01-00   | igniter                 | 1   | 02.35.05        |
| 96 | YD45-4.01.11.02-00 | extinction conductor    | 1   | 02.34.39        |
| 97 | YD45.00.00-9       | dust cover              | 2   | 04.01.07.04306  |
| 98 | YD45.01.01-1       | case body sealing plate | 1   | 08.020          |
| 99 | YD45.01.00-18      | damper                  | 1   | 06.02.015       |
|    |                    |                         |     |                 |