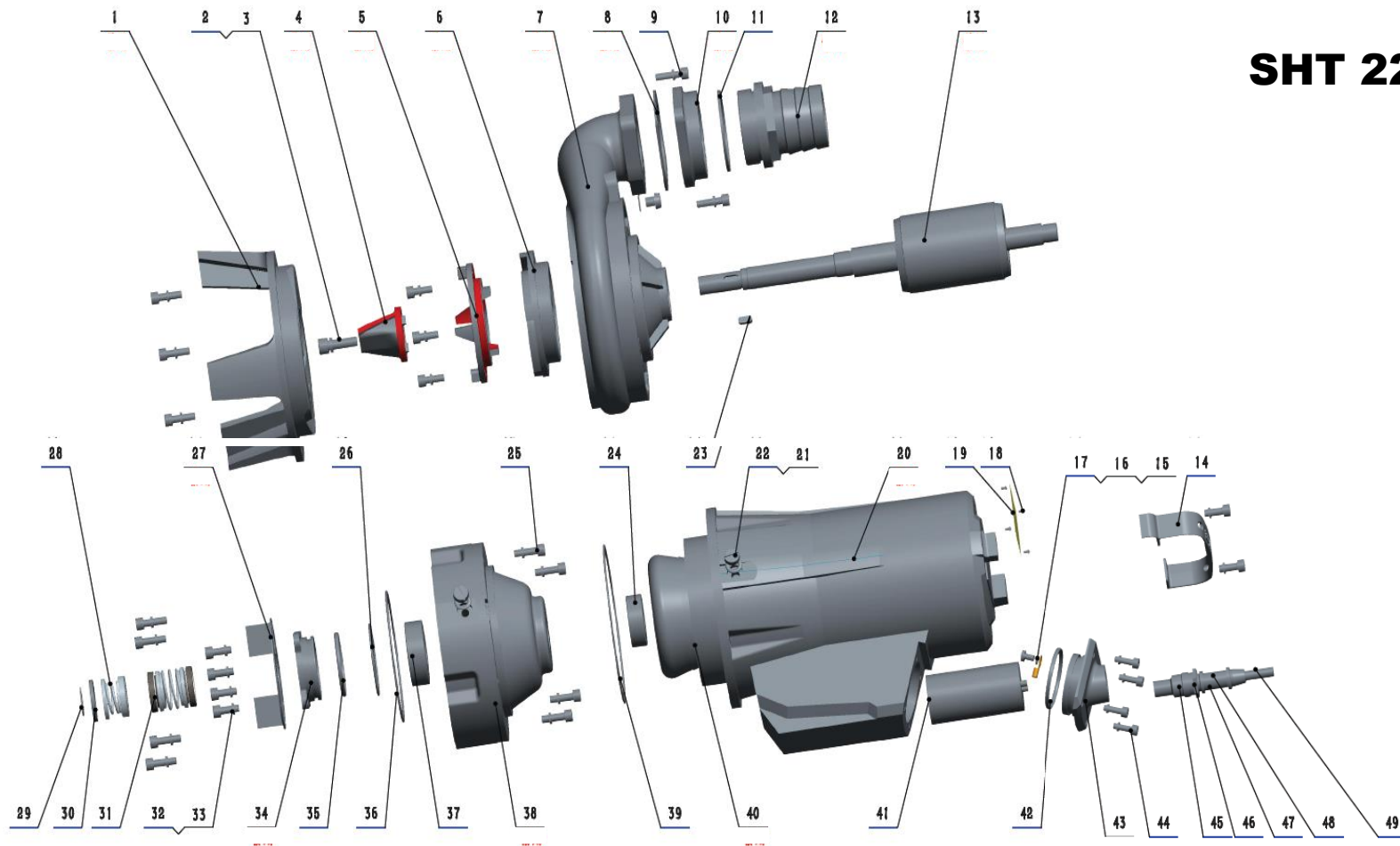


# SHT 2200T



- 1.Base
- 2.Spring washer
- 3.Screw
- 4.Cutting knife
- 5.Cutting disk
- 6.Impeller
- 7.Pump body
- 8.Gasket
- 9.Screw
- 10.Flange
- 11.Gasket
- 12.Outlet
- 13.Rotor
- 14.Handle

- 15.Screw
- 16.Wiring terminal
- 17.Spring washer
- 18.Rivet
- 19.Nameplate
- 20.Motor casing
- 21.Oring
- 22.Screw
- 23.Key
- 24.Bearing
- 25.Screw
- 26.Oring
- 27.Oil cavity cover

- 28.Mechanical seal
- 29.Circlip for shaft
- 30.Flat washer
- 31.Mechanical seal
- 32.Screw
- 33.Spring washer
- 34.Bearing cap
- 35.Oring
- 36.Oring
- 37.Bearing
- 38.Oil cavity
- 39.Oring
- 40.Stator with winding

- 41.Capacitor
- 42.Oring
- 43.Cable box cover
- 44.Screw
- 45.Cable fixing washer
- 46.Cable gland
- 47.Cable shield
- 49.Cable

# SHT 2200T

Nº Desp	Codigo	Codigo proveedor	Denominación
1	SH-103	50WQ12-18_103	Base for 50WQ12-18-2.2QG
2	SH-002	50WQ-QG-02	Spring washer
3	SH-003	50WQ-QG-03	Screw
4	SH-096	50WQ12-18_096	Cutting knife for 50WQ12-18-2.2QG
5	SH-097	50WQ12-18_097	Cutting disk for 50WQ12-18-2.2QG
6	SH-100	50WQ12-18_100	Impeller for 50WQ12-18-2.2QG
7	SH-104	50WQ12-18_104	Pump body for 50WQ12-18-2.2QG
8	SH-105	50WQ12-18_105	Gasket for 50WQ12-18-2.2QG
9	SH-009	50WQ-QG-09	Screw
10	SH-106	50WQ12-18_106	Flange for 50WQ12-18-2.2QG
11	SH-107	50WQ12-18_107	Gasket for 50WQ12-18-2.2QG
12	SH-108	50WQ12-18_108	Outlet for 50WQ12-18-2.2QG
13	SH-013D	50WQ13T-2,2kW	Rotor 2,2 Kw tri 400V
14	SH-109	50WQ12-18_109	Hanging ring for 50WQ12-18-2.2QG
15	SH-015	50WQ-QG-15	Screw
16	SH-016	50WQ-QG-16	Wiring terminal
17	SH-017	50WQ-QG-17	Spring washer
18	SH-018	50WQ-QG-18	Rivet
19	SH-019D	50WQ19T-2,2kW	Nameplate 2,2 Kw tri 400V
20	SH-110	50WQ12-18_110	Motor casing for 50WQ12-18-2.2QG
22	SH-022	50WQ-QG-22	Screw
23	SH-111	50WQ12-18_111	Key for 50WQ12-18-2.2QG
24	SH-101	50WQ12-18_101	Bearing 1 for 50WQ12-18-2.2QG (6204-2RZ)
25	SH-025	50WQ-QG-25	Screw
27	SH-113	50WQ12-18_113	Oil cavity cover for 50WQ12-18-2.2QG
28	SH-098	50WQ12-18_098	Mechanical seal 1 for 50WQ12-18-2.2QG (LADO BOMBA)
29	SH-114	50WQ12-18_114	Circlip for shaft for 50WQ12-18-2.2QG
30	SH-115	50WQ12-18_115	Flat washer for 50WQ12-18-2.2QG
31	SH-099	50WQ12-18_099	Mechanical seal 2 for 50WQ12-18-2.2QG (LADO MOTOR)
32	SH-032	50WQ-QG-32	Screw
33	SH-033	50WQ-QG-33	Spring washer
34	SH-116	50WQ12-18_116	Bearing cap for 50WQ12-18-2.2QG
37	SH-102	50WQ12-18_102	Bearing 2 for 50WQ12-18-2.2QG (6205-2RZ)
38	SH-112	50WQ12-18_112	Oil cavity for 50WQ12-18-2.2QG
40	SH-117	50WQ12-18_117	Stator with winding for 50WQ12-18-2.2QG
44	SH-044	50WQ-QG-44	Screw
21,26,35,36,39,42	SH-036	50WQ12-18_036	Oring set for 50WQ12-18-2.2QG (position 21, 26, 35, 36, 39, 42)
45,46,47,49	SH-049	50WQ12-18_049	Cabel set for 50WQ12-18-2.2QG