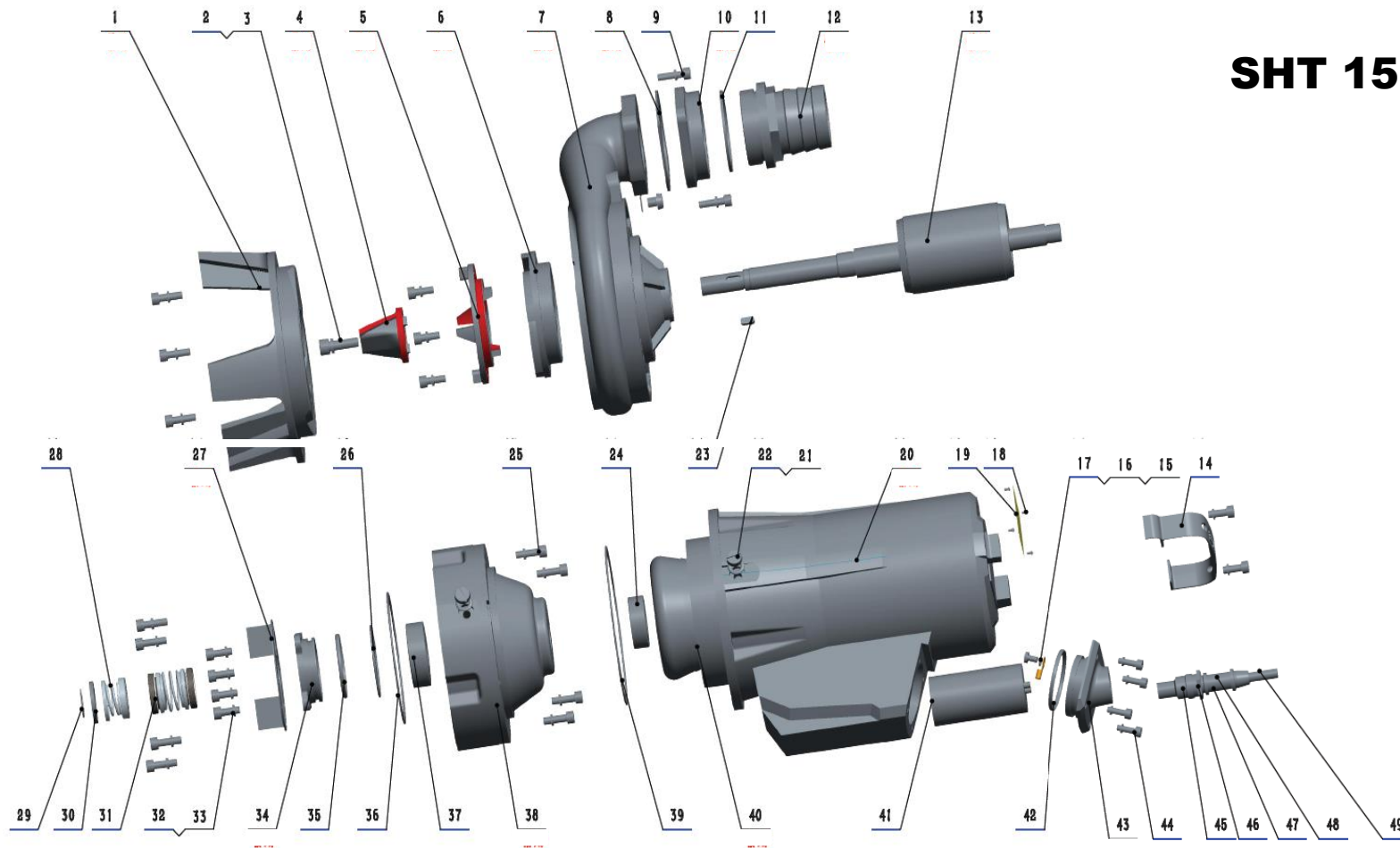


# SHT 1500T



- |                 |                     |                        |                        |
|-----------------|---------------------|------------------------|------------------------|
| 1.Base          | 15.Screw            | 28.Mechanical seal     | 41.Capacitor           |
| 2.Spring washer | 16.Wiring terminal  | 29.Circlip for shaft   | 42.Oring               |
| 3.Screw         | 17.Spring washer    | 30.Flat washer         | 43.Cable box cover     |
| 4.Cutting knife | 18.Rivet            | 31.Mechanical seal     | 44.Screw               |
| 5.Cutting disk  | 19.Nameplate        | 32.Screw               | 45.Cable fixing washer |
| 6.Impeller      | 20.Motor casing     | 33.Spring washer       | 46.Cable gland         |
| 7.Pump body     | 21.Oring            | 34.Bearing cap         | 47.Cable shield        |
| 8.Gasket        | 22.Screw            | 35.Oring               | 49.Cable               |
| 9.Screw         | 23.Key              | 36.Oring               |                        |
| 10.Flange       | 24.Bearing          | 37.Bearing             |                        |
| 11.Gasket       | 25.Screw            | 38.Oil cavity          |                        |
| 12.Outlet       | 26.Oring            | 39.Oring               |                        |
| 13.Rotor        | 27.Oil cavity cover | 40.Stator with winding |                        |
| 14.Handle       |                     |                        |                        |

# SHT 1500T

Nº Desp	Codigo	Codigo proveedor	Denominación
1	SH-081	50WQ10-14_081	Base for 50WQ10-14-1.5QG
2	SH-002	50WQ-QG-02	Spring washer
3	SH-003	50WQ-QG-03	Screw
4	SH-074	50WQ10-14_074	Cutting knife for 50WQ10-14-1.5QG
5	SH-075	50WQ10-14_075	Cutting disk for 50WQ10-14-1.5QG
6	SH-078	50WQ10-14_078	Impeller for 50WQ10-14-1.5QG
7	SH-082	50WQ10-14_082	Pump body for 50WQD8-10-1.1QG
8	SH-083	50WQ10-14_083	Gasket for 50WQ10-14-1.5QG
9	SH-009	50WQ-QG-09	Screw
10	SH-084	50WQ10-14_084	Flange for 50WQD8-10-1.1QG
11	SH-085	50WQ10-14_085	Gasket for 50WQ10-14-1.5QG
12	SH-086	50WQ10-14_086	Outlet for 50WQ10-14-1.5QG
13	SH-013C	50WQ13T-1,5kW	Rotor 1,5 Kw tri 400V
14	SH-087	50WQ10-14_087	Hanging ring for 50WQ10-14-1.5QG
15	SH-015	50WQ-QG-15	Screw
16	SH-016	50WQ-QG-16	Wiring terminal
17	SH-017	50WQ-QG-17	Spring washer
18	SH-018	50WQ-QG-18	Rivet
19	SH-019C	50WQ19T-1,5kW	Nameplate 1,5 Kw tri 400V
20	SH-088	50WQ10-14_088	Motor casing for 50WQ10-14-1.5QG
22	SH-022	50WQ-QG-22	Screw
23	SH-089	50WQ10-14_089	Key for 50WQ10-14-1.5QG
24	SH-079	50WQ10-14_079	Bearing 1 for 50WQ10-14-1.5QG (6204-2RZ)
25	SH-025	50WQ-QG-25	Screw
27	SH-091	50WQ10-14_091	Oil cavity cover for 50WQ10-14-1.5QG
28	SH-076	50WQ10-14_076	Mechanical seal 1 for 50WQ10-14-1.5QG (LADO BOMBA)
29	SH-092	50WQ10-14_092	Circlip for shaft for 50WQ10-14-1.5QG
30	SH-093	50WQ10-14_093	Flat washer for 50WQ10-14-1.5QG
31	SH-077	50WQ10-14_077	Mechanical seal 2 for 50WQ10-14-1.5QG (LADO MOTOR)
32	SH-032	50WQ-QG-32	Screw
33	SH-033	50WQ-QG-33	Spring washer
34	SH-094	50WQ10-14_094	Bearing cap for 50WQ10-14-1.5QG
37	SH-080	50WQ10-14_080	Bearing 2 for 50WQ10-14-1.5QG (6205-2RZ)
38	SH-090	50WQ10-14_090	Oil cavity for 50WQ10-14-1.5QG
40	SH-095	50WQ10-14_095	Stator with winding for 50WQ10-14-1.5QG
44	SH-044	50WQ-QG-44	Screw
21,26,35,36,39,42	SH-035	50WQ10-14_035	Oring set for 50WQ10-14-1.5QG (position 21, 26, 35, 36, 39, 42)
45,46,47,49	SH-047	50WQ10-14_047	Cabel set for 50WQ10-14-1.5QG