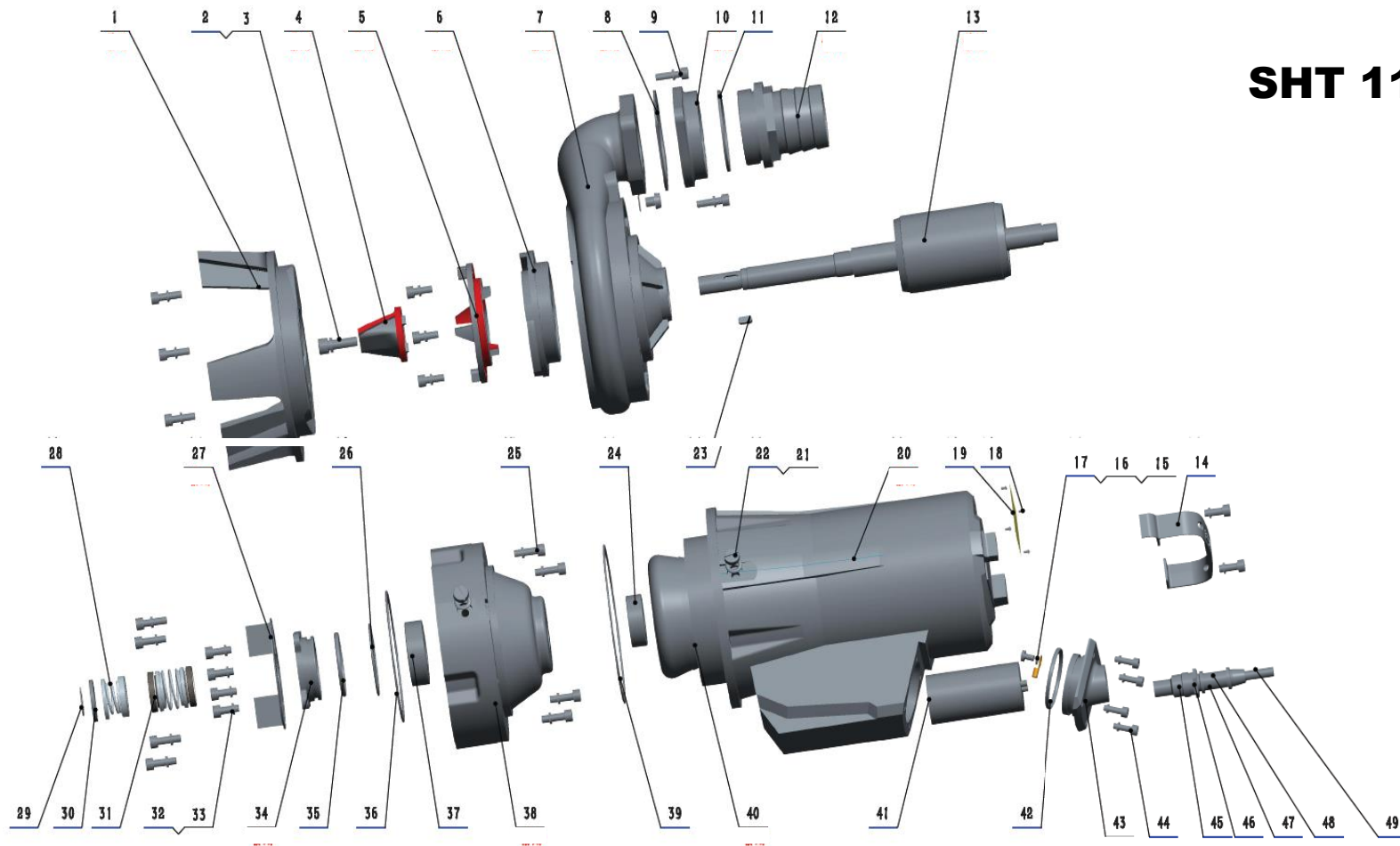


# SHT 1100M



- |                 |                     |                        |                        |
|-----------------|---------------------|------------------------|------------------------|
| 1.Base          | 15.Screw            | 28.Mechanical seal     | 41.Capacitor           |
| 2.Spring washer | 16.Wiring terminal  | 29.Circlip for shaft   | 42.Oring               |
| 3.Screw         | 17.Spring washer    | 30.Flat washer         | 43.Cable box cover     |
| 4.Cutting knife | 18.Rivet            | 31.Mechanical seal     | 44.Screw               |
| 5.Cutting disk  | 19.Nameplate        | 32.Screw               | 45.Cable fixing washer |
| 6.Impeller      | 20.Motor casing     | 33.Spring washer       | 46.Cable gland         |
| 7.Pump body     | 21.Oring            | 34.Bearing cap         | 47.Cable shield        |
| 8.Gasket        | 22.Screw            | 35.Oring               | 49.Cable               |
| 9.Screw         | 23.Key              | 36.Oring               |                        |
| 10.Flange       | 24.Bearing          | 37.Bearing             |                        |
| 11.Gasket       | 25.Screw            | 38.Oil cavity          |                        |
| 12.Outlet       | 26.Oring            | 39.Oring               |                        |
| 13.Rotor        | 27.Oil cavity cover | 40.Stator with winding |                        |
| 14.Handle       |                     |                        |                        |

# SHT 1100M

Nº Desp	Codigo	Codigo proveedor	Denominación
1	SH-057	50WQD8-10_057	Base for 50WQD8-10-1.1QG
2	SH-002	50WQ-QG-02	Spring washer
3	SH-003	50WQ-QG-03	Screw
4	SH-039	50WQD8-10_039	Cutting knife for 50WQD8-10-1.1QG
5	SH-051	50WQD8-10_051	Cutting disk for 50WQD8-10-1.1QG
6	SH-054	50WQD8-10_054	Impeller for 50WQD8-10-1.1QG
7	SH-058	50WQD8-10_058	Pump body for 50WQD8-10-1.1QG
8	SH-059	50WQD8-10_059	Gasket for 50WQD8-10-1.1QG
9	SH-009	50WQ-QG-09	Screw
10	SH-060	50WQD8-10_060	Flange for 50WQD8-10-1.1QG
11	SH-061	50WQD8-10_061	Gasket for 50WQD8-10-1.1QG
12	SH-062	50WQD8-10_062	Outlet for 50WQD8-10-1.1QG
13	SH-013B	50WQ13-1,1kW	Rotor 1,1 Kw mono 230V
14	SH-063	50WQD8-10_063	Handle for 50WQD8-10-1.1QG
15	SH-015	50WQ-QG-15	Screw
16	SH-016	50WQ-QG-16	Wiring terminal
17	SH-017	50WQ-QG-17	Spring washer
18	SH-018	50WQ-QG-18	Rivet
19	SH-019B	50WQ19M-1,1kW	Nameplate 1,1 Kw mono 230V
20	SH-064	50WQD8-10_064	Motor casing for 50WQD8-10-1.1QG
22	SH-022	50WQ-QG-22	Screw
23	SH-065	50WQD8-10_065	Key for 50WQD8-10-1.1QG
24	SH-055	50WQD8-10_055	Bearing 1 for 50WQD8-10-1.1QG (6302-2RZ)
25	SH-025	50WQ-QG-25	Screw
27	SH-067	50WQD8-10_067	Oil cavity cover for 50WQD8-10-1.1QG
28	SH-052	50WQD8-10_052	Mechanical seal 1 for 50WQD8-10-1.1QG ( LADO BOMBA)
29	SH-068	50WQD8-10_068	Circlip for shaft
30	SH-069	50WQD8-10_069	Flat washer for 50WQD8-10-1.1QG (18/304)
31	SH-053	50WQD8-10_053	Mechanical seal 2 for 50WQD8-10-1.1QG (LADO MOTOR)
32	SH-032	50WQ-QG-32	Screw
33	SH-033	50WQ-QG-33	Spring washer
34	SH-070	50WQD8-10_070	Bearing cap for 50WQD8-10-1.1QG
37	SH-056	50WQD8-10_056	Bearing 2 for 50WQD8-10-1.1QG (6304-2RZ)
38	SH-066	50WQD8-10_066	Oil cavity for 50WQD8-10-1.1QG
40	SH-071	50WQD8-10_071	Stator with winding for 50WQD8-10-1.1QG
41	SH-072	50WQD8-10_072	Capacitor for 50WQD8-10-1.1QG
43	SH-073	50WQD8-10_073	Cable box cover for 50WQD8-10-1.1QG
44	SH-044	50WQ-QG-44	Screw
21,26,35,36,39,42	SH-026	50WQD8-10_026	Oring set for 50WQD8-10-1.1QG
45,46,47,49	SH-046	50WQD8-10_046	Cabel set for 50WQD8-10-1.1QG