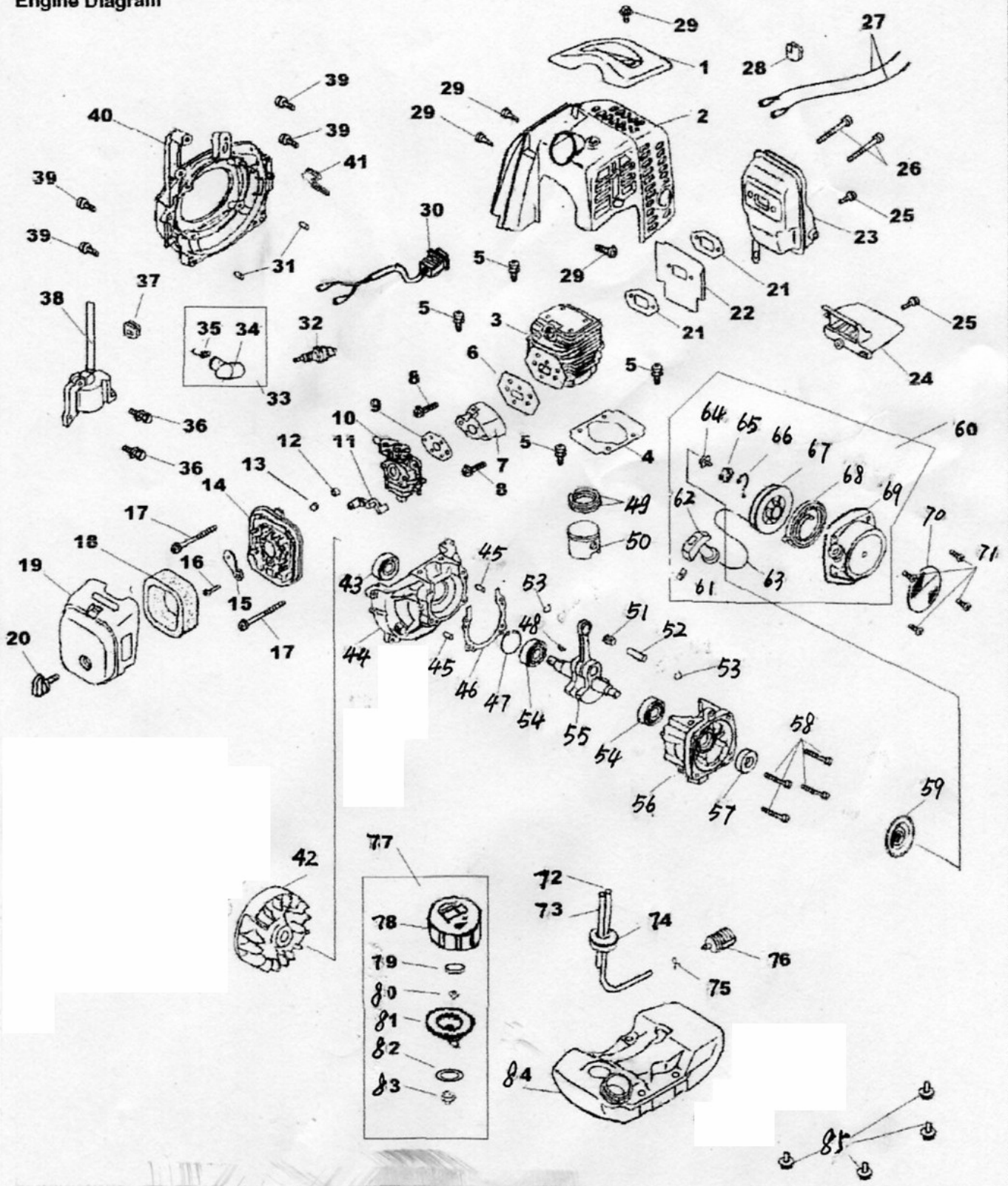


Parts and list

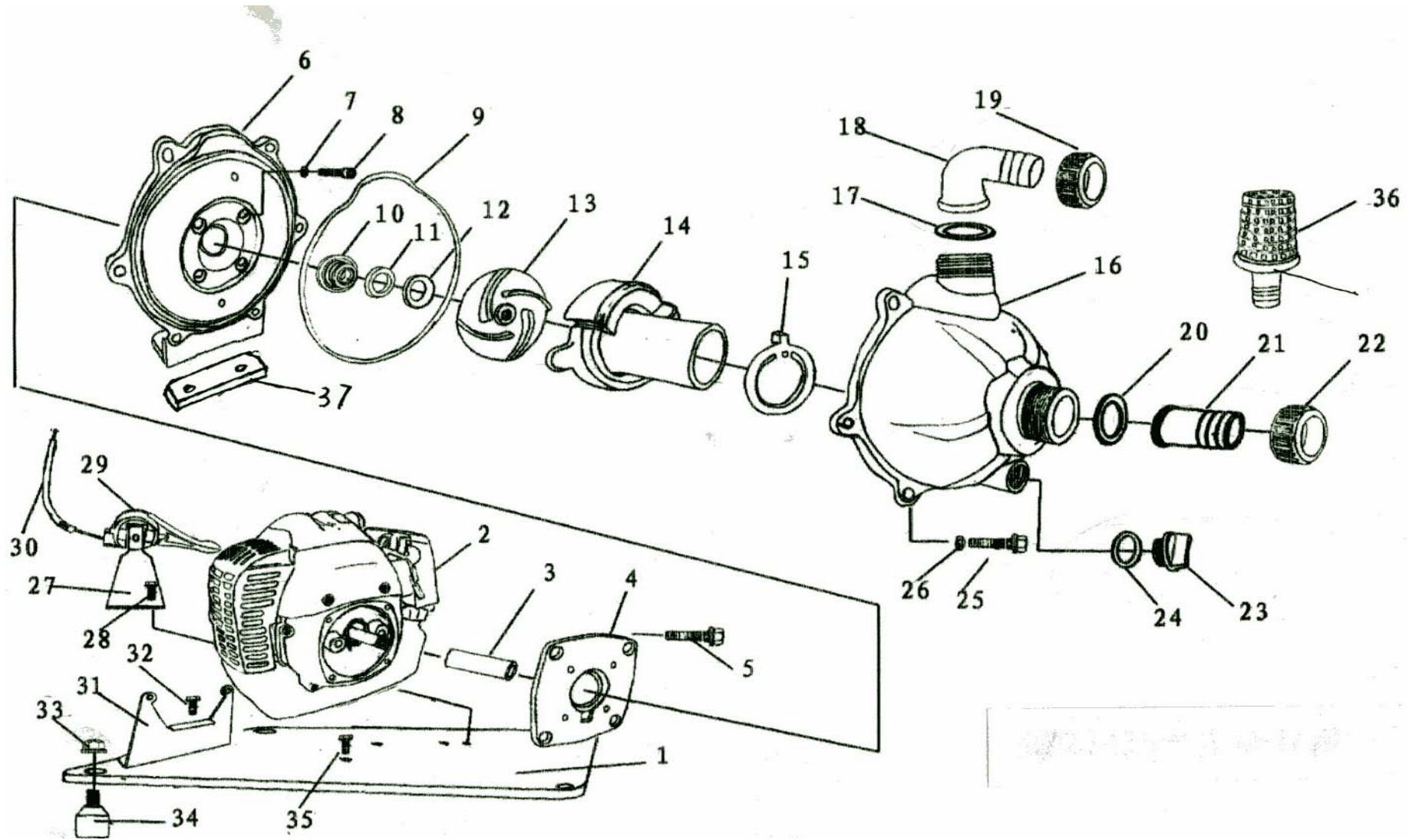
Engine Diagram



WATER PUMP PARTS LIST
MODEL MF19

| Item | Parts No. | Description | Qty |
|-----------|---------------|--------------------------------|----------|
| 1 | E34001 | Press plate | 1 |
| 2 | E34002 | cylinder protector | 1 |
| 3 | E34003 | Cylinder | 1 |
| 4 | E34004 | cylinder gasket | 1 |
| 5 | E34005 | Screw M5×20 | 4 |
| 6 | E34006 | carburetor connector gasket | 1 |
| 7 | E34007 | Carburetor connector | 1 |
| 8 | E34008 | screw M5×25 | 2 |
| 9 | E34009 | Carburetor gasket | 1 |
| 10 | E34010 | carburetor | 1 |
| 11 | E34011 | Choke lever | 1 |
| 12 | E34012 | Bush | |
| 13 | E34013 | Nut M4 | |
| 14 | E34014 | Air filter seat | 1 |
| 15 | E34015 | choke lever | 1 |
| 16 | E34016 | Japping screw ST4.2×13-F-H | 1 |
| 17 | E34017 | Carburetor M5×50 | 2 |
| 18 | E34018 | Air filter element | 1 |
| 19 | E34019 | Air filter cover | 1 |
| 20 | E34020 | Screw | 1 |
| 21 | E34021 | Muffler gasket | 1 |
| 22 | E34022 | Heat insulator | 1 |
| 23 | E34023 | Muffler | 1 |
| 24 | E34024 | Protecting plate | 1 |
| 25 | E34025 | Screw M5*14 | 3 |
| 26 | E34026 | Screw M5×60 | 2 |
| 27 | E34027 | Ignition wire | |
| 28 | E34028 | Rubber block | 1 |
| 29 | E34029 | Screw M5×12 | 4 |
| 30 | E34030 | Cease fire line | 1 |
| 31 | E34031 | Dowel pin | 2 |
| 32 | E34032 | Spark plug | 1 |
| 33 | E34033 | Spark plug cap assembly | 1 |
| 34 | E34034 | Spark plug cap | 1 |
| 35 | E34035 | Spark plug clip | 1 |
| 36 | E34036 | Screw M5×20 | 2 |
| 37 | E34037 | Rubber clip | 1 |
| 38 | E34038 | TCI | 1 |
| 39 | E34039 | Screw M5×20 | 4 |
| 40 | E34040 | Flywheel cover | 1 |
| 41 | E34041 | Wind guide | 1 |
| 42 | E34042 | Flywheel | 1 |

| | | | |
|-----------|---------------|--|----------|
| 43 | E34043 | Oil seal | 1 |
| 44 | E34044 | Crankcase(A) | 1 |
| 45 | E34045 | Dowel pin ϕ 3×8 | 2 |
| 46 | E34046 | Crankcase gasket | 1 |
| 47 | E34047 | Bearing clip | 1 |
| 48 | E34048 | Flywheel key | 1 |
| 49 | E34049 | Piston ring | 2 |
| 50 | E34050 | Piston | 1 |
| 51 | E34051 | Needle bearing | 1 |
| 52 | E34052 | Piston pin | 1 |
| 53 | E34053 | Piston pin clip | 2 |
| 54 | E34054 | Ball bearing | 2 |
| 55 | E34055 | Crankshaft and connecting rod assembly | 1 |
| 56 | E34056 | Crankcase(B) | 1 |
| 57 | E34057 | Oil seal | 1 |
| 58 | E34058 | Screw M5×30 | 4 |
| 59 | E34059 | Starting pawl | 1 |
| 60 | E34060 | Recoil starter | 1 |
| 61 | E34061 | Push plate | 1 |
| 62 | E34062 | Rope handle | 1 |
| 63 | E34063 | Rope | 1 |
| 64 | E34064 | Screw | 1 |
| 65 | E34065 | Plastic push plate | 1 |
| 66 | E34066 | Return spring | 1 |
| 67 | E34067 | Reel | 1 |
| 68 | E34068 | Spiral spring | 1 |
| 69 | E34069 | Starter cover | 1 |
| 70 | E34070 | Sticker | |
| 71 | E34071 | Screw M6×16 | 4 |
| 72 | E34072 | Fuel hose | 1 |
| 73 | E34073 | Fuel back hose | 1 |
| 74 | E34074 | Fuel seal | 1 |
| 75 | E34075 | Hose clip | 1 |
| 76 | E34076 | Fuel filter | 1 |
| 77 | E34077 | Fuel tank cap assembly | 1 |
| 78 | E34078 | Fuel tank cap | 1 |
| 79 | E34079 | Cap filter | |
| 80 | E34080 | Vent plug | 1 |
| 81 | E34081 | Seal seat | 1 |
| 82 | E34082 | Cap seal | 1 |
| 83 | E34083 | Small cap | 1 |
| 84 | E34084 | Fuel tank | 1 |
| 85 | E34085 | Screw M5×22 | 4 |



| Parts No. | Description | Qty |
|----------------|--|-----|
| 1 | pump bedplate | 1 |
| 2 | engine (1E36F) | 1 |
| 3 | shaft sleeve | 1 |
| 4 | connection flange | 1 |
| 5 | connection flange fixed screw M6×15 | 4 |
| 6 | pump base | 1 |
| 7 | plain cushion | 4 |
| 8 | inner hexagonal bolt M5×25 | 4 |
| 9 | pump body washer | 1 |
| 10 | water seal base | 1 |
| 11 | water seal abrasionproof washer | 1 |
| 12 | water seal washer slipcover | 1 |
| 13 | impeller | 1 |
| 14 | turbo | 1 |
| 15 | water inlet cover washer | 1 |
| 16 | pump body | 1 |
| 17 | water outlet coupling gasket | 1 |
| 18 | water outlet joint | 1 |
| 19 | water outlet joint fixed screw | 1 |
| 20 | water inlet coupling gasket | 1 |
| 21 | water inlet joint | 1 |
| 22 | water inlet joint fixed nut | 1 |
| 23 | drain plug | 1 |
| 24 | dewatering outlet seal washer | 1 |
| 25 | outer hexagonal bolt M6×20 | 6 |
| 26 | plain cushion | 6 |
| 27 | handle throttle switch support | 1 |
| 28 | fixed support screwM6×15 | 2 |
| 29 | handle throttle switch | 1 |
| 30 | handle throttle bracing rope | 1 |
| 31 | engine fixed support | 1 |
| 32 | fixed support screwM8×15 | 2 |
| 33 | fixed nut M8 | 6 |
| 34 | rubber shockproof mount | 4 |
| 35 | fixed support screwM8×15 | 2 |
| 36 | filter casing | 1 |
| 37 | pump body rubber washer | 1 |
| REMARKS | (PARTS NO.5、7、8、25、26、28、32、33、35)STANDARD PARTS | |
| | (PARTS NO.18、19、21、22、23、36) PASTIC PARTS | |
| | (PARTS NO.9、15、17、20、24) GASKETS | |