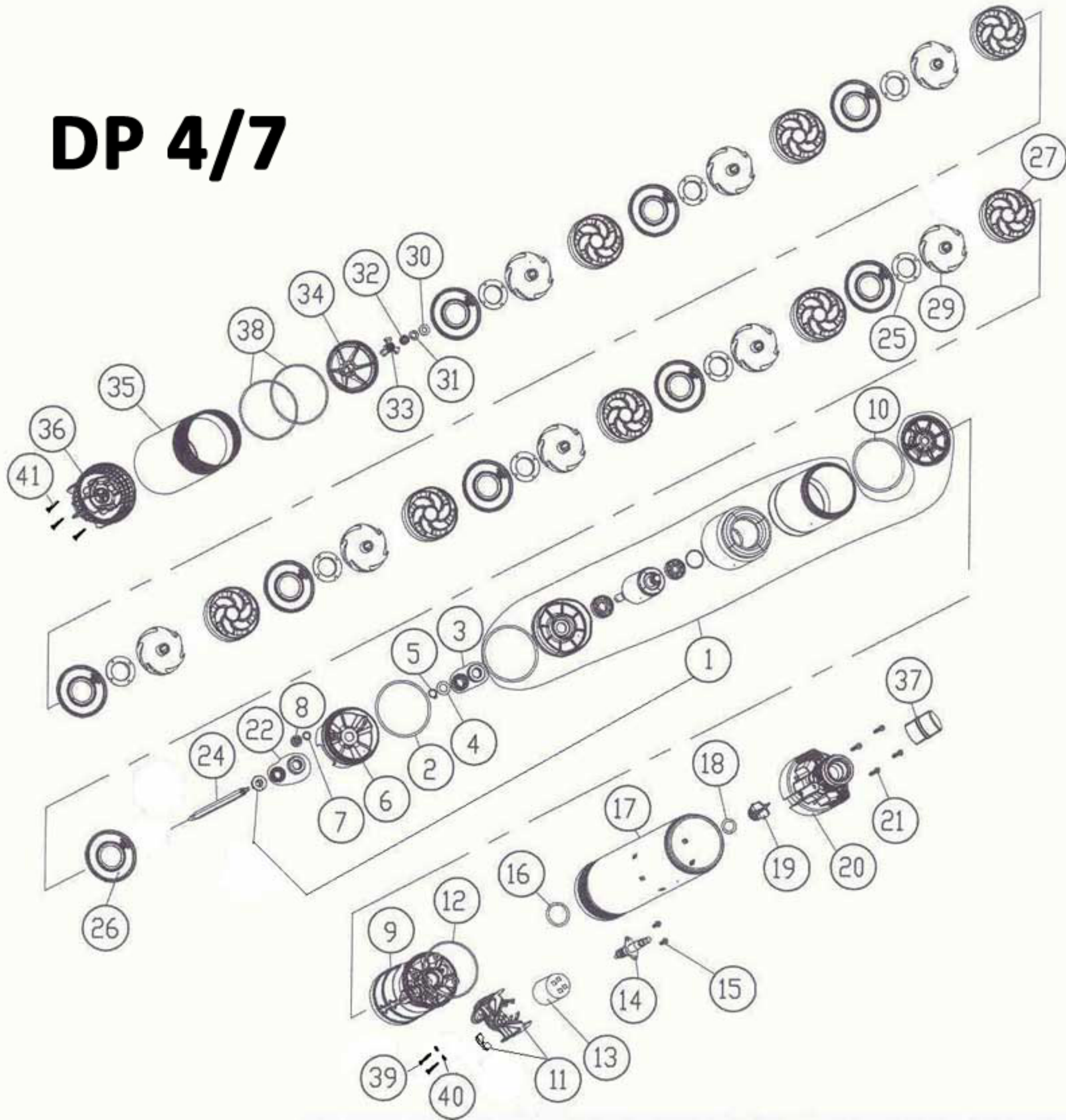


DP 4/7



DP 4/7

Model	Ref.	Art. Leader	Descrizione	Description	Description
CA607001 - DP 4/7 SSC (INOX/COMP)	1	S3600423	Gruppo motore	Motor	Moteur
CA607001 - DP 4/7 SSC (INOX/COMP)	2	P1200006	Guarnizione O.Ring	Joint O.Ring	Joint torique
CA607001 - DP 4/7 SSC (INOX/COMP)	3	P1220003	Gruppo tenuta meccanica	Mechanical seal	Etancheité mecanique
CA607001 - DP 4/7 SSC (INOX/COMP)	4	P1120027	Rosetta	Washer	Rondelle
CA607001 - DP 4/7 SSC (INOX/COMP)	5	P1120022	Anello seeger	Ring seeger	Anneau seeger
CA607001 - DP 4/7 SSC (INOX/COMP)	6	S3501096	Flangia camera olio	Flange	
CA607001 - DP 4/7 SSC (INOX/COMP)	7	P1200139	Guarnizione O.Ring	Joint O.Ring	Joint torique
CA607001 - DP 4/7 SSC (INOX/COMP)	8	P1510052	Tappo	Cap	Bouchon
CA607001 - DP 4/7 SSC (INOX/COMP)	9	S3600424	Coperchio motore	Motor holder	Moteur couvercle
CA607001 - DP 4/7 SSC (INOX/COMP)	10	P1200128	Guarnizione O.Ring	Joint O.Ring	Joint torique
CA607001 - DP 4/7 SSC (INOX/COMP)	11	S3600496	Portacondensatore + Cricchetto serracavo	Capacitor holder + Cable fastener	
CA607001 - DP 4/7 SSC (INOX/COMP)	12	P1200138	Guarnizione O.Ring	Joint O.Ring	Joint torique
CA607001 - DP 4/7 SSC (INOX/COMP)	13	P1360050	Condensatore	Capacitor	Condensateur
CA607001 - DP 4/7 SSC (INOX/COMP)	14	S3600422	Cavo di alimentazione	Cable	Câble
CA607001 - DP 4/7 SSC (INOX/COMP)	15	P1100034	Vite	Screw	Vis
CA607001 - DP 4/7 SSC (INOX/COMP)	16	P1200062	Guarnizione O.Ring	Joint O.Ring	Joint torique
CA607001 - DP 4/7 SSC (INOX/COMP)	17	P1600042	Camicia esterna inox	Inox jacket	Chemise inox
CA607001 - DP 4/7 SSC (INOX/COMP)	18	P1200026	Guarnizione O.Ring	Joint O. Ring	Joint torique
CA607001 - DP 4/7 SSC (INOX/COMP)	19	S3501104	Otturatore	Obturator	
CA607001 - DP 4/7 SSC (INOX/COMP)	20	S3501128	Coperchio pompa	Cap	Couvercle
CA607001 - DP 4/7 SSC (INOX/COMP)	21	P1100012	Vite	Screw	Vis
CA607001 - DP 4/7 SSC (INOX/COMP)	22	P1220016	Gruppo tenuta meccanica AISI 316	Mechanical seal AISI 316	Etancheité mecanique AISI 316
CA607001 - DP 4/7 SSC (INOX/COMP)	24	S3100075	Albero esagonale	Hexagonal shaft	Arbre hexagonale
CA607001 - DP 4/7 SSC (INOX/COMP)	25	P1510057	Anello di rasamento	Clearance ring	
CA607001 - DP 4/7 SSC (INOX/COMP)	26	S3501235	Tappo diffusore	Diffuser cap	Couvercle diffuseur
CA607001 - DP 4/7 SSC (INOX/COMP)	27	S3501234	Diffusore	Diffuser	Diffuseur
CA607001 - DP 4/7 SSC (INOX/COMP)	29	S3050006	Girante	Impeller	Roue
CA607001 - DP 4/7 SSC (INOX/COMP)	30	P1120014	Rosetta	Washer	Rondelle
CA607001 - DP 4/7 SSC (INOX/COMP)	31	P1120064	Rosetta grower	Washer	Rondelle
CA607001 - DP 4/7 SSC (INOX/COMP)	32	P1110009	Dado	Nut	Ecrou
CA607001 - DP 4/7 SSC (INOX/COMP)	33	P1230037	Boccola guida albero	Shaft pilot bush	
CA607001 - DP 4/7 SSC (INOX/COMP)	34	S3501108	Supporto diffusori	Diffuser flange	Flasque diffuseur
CA607001 - DP 4/7 SSC (INOX/COMP)	35	S3501109	Camicia esterna in plastica	Plastic jacket	
CA607001 - DP 4/7 SSC (INOX/COMP)	36	S3501106	Base filtro	Filter base	Base filtre
CA607001 - DP 4/7 SSC (INOX/COMP)	37	G4550006	Niplo 1" M/M con OR	Nipple 1" M/M with ORing	
CA607001 - DP 4/7 SSC (INOX/COMP)	38	P1200142	Guarnizione O.Ring	Joint O.Ring	Joint torique
CA607001 - DP 4/7 SSC (INOX/COMP)	39	P1100006	Vite	Screw	Vis
CA607001 - DP 4/7 SSC (INOX/COMP)	40	P1120003	Rosetta elastica	Spring-washer	Rondelle élastique
CA607001 - DP 4/7 SSC (INOX/COMP)	41	P1100017	Vite	Screw	Vis