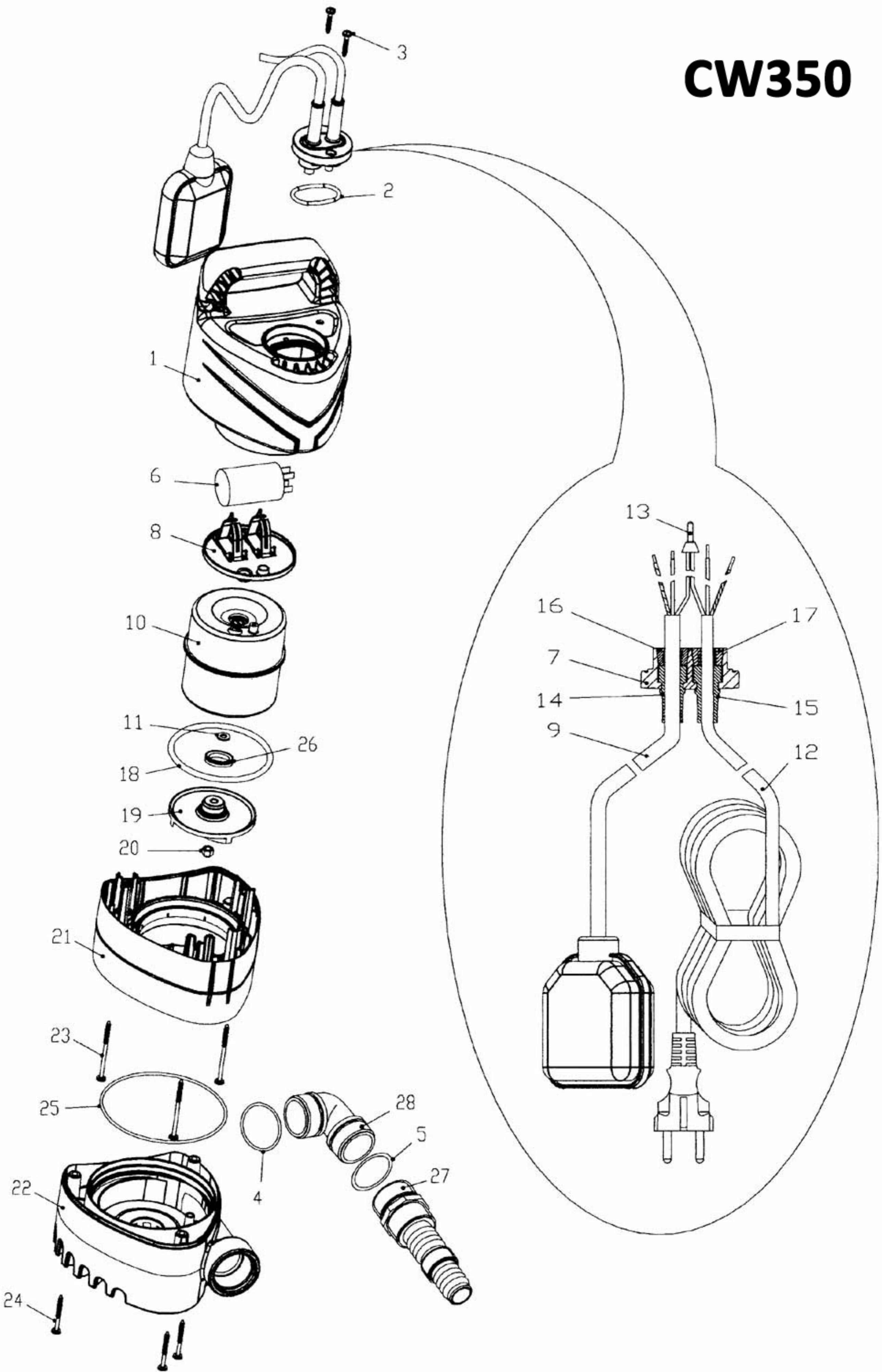


CW350



CW350

Model	Ref.	Art. Leader	Descrizione	Description	Description
CA410001 - CW 350	1	S3600336	Coperchio	Cap	Couvercle
CA410001 - CW 350	2	P1200087	Guarnizione O.Ring	Joint O.Ring	Joint torique
CA410001 - CW 350	3	P1100034	Vite	Screw	Vis
CA410001 - CW 350	4	P1200009	Guarnizione O.Ring	Joint O.Ring	Joint torique
CA410001 - CW 350	5	P1200002	Guarnizione O.Ring	Joint O.Ring	Joint torique
CA410001 - CW 350	6	P1360018	Condensatore	Capacitor	Condensateur
CA410001 - CW 350	7	S3500896	Coperchietto collegamenti elettrici	Small cover with electrical connections	Couvercle liaisons electriques
CA410001 - CW 350	8	S3500917	Disco portacondensatore	Capacitor holder	Plateau boîtier
CA410001 - CW 350	9	P1380040	Galleggiante	Floatswitch	Flotteur
CA410001 - CW 350	10	G4301008	Gruppo motore	Motor	Moteur
CA410001 - CW 350	11	P1120006	Rosetta	Washer	Rondelle
CA410001 - CW 350	12	P1320032	Cavo di alimentazione 10 m. H05RN-F	Cable 10m. H05RN-F	Câble 10m. H05RN-F
CA410001 - CW 350	13	P1390034	Connettore	Tab terminal	Connecteur
CA410001 - CW 350	14	P1230031	Passacavo d9	Grommet d9	Passa-câble d9
CA410001 - CW 350	15	P1230030	Passacavo d7	Grommet d7	Passa-câble d7
CA410001 - CW 350	16	S3500898	Anello serracavo d9	Anti-tear ring d9	Anneau ferme-câble d9
CA410001 - CW 350	17	S3500899	Anello serracavo d7	Anti-tear ring d7	Anneau ferme-câble d7
CA410001 - CW 350	18	P1200007	Guarnizione O.Ring	Joint O.Ring	Joint torique
CA410001 - CW 350	19	S3500528	Girante	Impeller	Roue
CA410001 - CW 350	20	P1110005	Dado	Nut	Ecrou
CA410001 - CW 350	21	S3500916	Corpo pompa	Pump housing	Corps de pompe
CA410001 - CW 350	22	S3500918	Base filtro	Filter base	Base filtre
CA410001 - CW 350	23	P1100017	Vite	Screw	Vis
CA410001 - CW 350	24	P1100012	Vite	Screw	Vis
CA410001 - CW 350	25	P1200123	Guarnizione O.Ring	Joint O.Ring	Joint torique
CA410001 - CW 350	26	P1210002	Guarnizione V.Ring	V.Ring joint	Joint
CA410001 - CW 350	27	S3600107	Raccordo portagomma	Pipe fittings	Raccord
CA410001 - CW 350	28	S3600111	Curva con O.Ring	Elbow with O.Ring	Cuve avec O.Ring